

ECM-APL

Intel® Apollo lake processor 3.5 Micro Module

User's Manual

6th Ed – 08 March 2022

FCC Statement



THIS DEVICE COMPLIES WITH PART 15 FCC RULES. OPERATION IS SUBJECT TO THE FOLLOWING TWO CONDITIONS:

(1) THIS DEVICE MAY NOT CAUSE HARMFUL INTERFERENCE.

(2) THIS DEVICE MUST ACCEPT ANY INTERFERENCE RECEIVED INCLUDING INTERFERENCE THAT MAY CAUSE UNDESIRE OPERATION.

THIS EQUIPMENT HAS BEEN TESTED AND FOUND TO COMPLY WITH THE LIMITS FOR A CLASS "A" DIGITAL DEVICE, PURSUANT TO PART 15 OF THE FCC RULES.

THESE LIMITS ARE DESIGNED TO PROVIDE REASONABLE PROTECTION AGAINST HARMFUL INTERFERENCE WHEN THE EQUIPMENT IS OPERATED IN A COMMERCIAL ENVIRONMENT. THIS EQUIPMENT GENERATES, USES, AND CAN RADIATE RADIO FREQUENCY ENERGY AND, IF NOT INSTALLED AND USED IN ACCORDANCE WITH THE INSTRUCTION MANUAL, MAY CAUSE HARMFUL INTERFERENCE TO RADIO COMMUNICATIONS.

OPERATION OF THIS EQUIPMENT IN A RESIDENTIAL AREA IS LIKELY TO CAUSE HARMFUL INTERFERENCE IN WHICH CASE THE USER WILL BE REQUIRED TO CORRECT THE INTERFERENCE AT HIS OWN EXPENSE.

Notice

This guide is designed for experienced users to setup the system within the shortest time. For detailed information, please always refer to the electronic user's manual.

Copyright Notice

Copyright © 2022 Avalue Technology Inc., ALL RIGHTS RESERVED.

No part of this document may be reproduced, copied, translated, or transmitted in any form or by any means, electronic or mechanical, for any purpose, without the prior written permission of the original manufacturer.

Trademark Acknowledgement

Brand and product names are trademarks or registered trademarks of their respective owners.

Disclaimer

Avalue Technology Inc. reserves the right to make changes, without notice, to any product, including circuits and/or software described or contained in this manual in order to improve design and/or performance. Avalue Technology assumes no responsibility or liability for the use of the described product(s), conveys no license or title under any patent, copyright, or masks work rights to these products, and makes no representations or warranties that

these products are free from patent, copyright, or mask work right infringement, unless otherwise specified. Applications that are described in this manual are for illustration purposes only. Avalue Technology Inc. makes no representation or warranty that such application will be suitable for the specified use without further testing or modification.

Life Support Policy

Avalue Technology's PRODUCTS ARE NOT FOR USE AS CRITICAL COMPONENTS IN LIFE SUPPORT DEVICES OR SYSTEMS WITHOUT THE PRIOR WRITTEN APPROVAL OF Avalue Technology Inc.

As used herein:

1. Life support devices or systems are devices or systems which, (a) are intended for surgical implant into body, or (b) support or sustain life and whose failure to perform, when properly used in accordance with instructions for use provided in the labeling, can be reasonably expected to result in significant injury to the user.
2. A critical component is any component of a life support device or system whose failure to perform can be reasonably expected to cause the failure of the life support device or system, or to affect its safety or effectiveness.

A Message to the Customer

Avalue Customer Services

Each and every Avalue's product is built to the most exacting specifications to ensure reliable performance in the harsh and demanding conditions typical of industrial environments. Whether your new Avalue device is destined for the laboratory or the factory floor, you can be assured that your product will provide the reliability and ease of operation for which the name Avalue has come to be known.

Your satisfaction is our primary concern. Here is a guide to Avalue's customer services. To ensure you get the full benefit of our services, please follow the instructions below carefully.

Technical Support

We want you to get the maximum performance from your products. So if you run into technical difficulties, we are here to help. For the most frequently asked questions, you can easily find answers in your product documentation. These answers are normally a lot more detailed than the ones we can give over the phone. So please consult the user's manual first.

To receive the latest version of the user's manual; please visit our Web site at:

<http://www.avalue.com.tw/>

Product Warranty

Avalue warrants to you, the original purchaser, that each of its products will be free from defects in materials and workmanship for two years from the date of purchase.

This warranty does not apply to any products which have been repaired or altered by persons other than repair personnel authorized by Avalue, or which have been subject to misuse, abuse, accident or improper installation. Avalue assumes no liability under the terms of this warranty as a consequence of such events. Because of Avalue's high quality-control standards and rigorous testing, most of our customers never need to use our repair service. If any of Avalue's products is defective, it will be repaired or replaced at no charge during the warranty period. For out-of-warranty repairs, you will be billed according to the cost of replacement materials, service time, and freight. Please consult your dealer for more details. If you think you have a defective product, follow these steps:

1. Collect all the information about the problem encountered. (For example, CPU type and speed, Avalue's products model name, hardware & BIOS revision number, other hardware and software used, etc.) Note anything abnormal and list any on-screen messages you get when the problem occurs.
2. Call your dealer and describe the problem. Please have your manual, product, and any helpful information available.
3. If your product is diagnosed as defective, obtain an RMA (return material authorization) number from your dealer. This allows us to process your good return more quickly.
4. Carefully pack the defective product, a complete Repair and Replacement Order Card and a photocopy proof of purchase date (such as your sales receipt) in a shippable container. A product returned without proof of the purchase date is not eligible for warranty service.
5. Write the RMA number visibly on the outside of the package and ship it prepaid to your dealer.

Content

1. Getting Started	8
1.1 Safety Precautions	8
1.2 Packing List.....	8
1.3 Document Amendment History	9
1.4 Manual Objectives.....	10
1.5 System Specifications	11
1.6 Architecture Overview—Block Diagram	13
2. Hardware Configuration	14
2.1 Product Overview.....	15
2.2 Jumper and Connector List.....	16
2.3 Setting Jumpers & Connectors	18
2.3.1 AT/ ATX Input power select (JAT1).....	18
2.3.2 Serial port 1 pin9 signal select (JRI1)	18
2.3.3 Clear CMOS (JBAT1).....	19
2.3.4 LCD backlight brightness adjustment (JBKL_SEL1).....	19
2.3.5 LCD Inverter connector (JBKL1)	20
2.3.6 CPU fan connector (CPU_FAN1).....	20
2.3.7 Serial port 2/3/4/5/6 connector (JCOM2/3/4/5/6)	21
2.3.8 General purpose I/O connector (JDIO1)	21
2.3.9 Touch Panel connector (JTOUCH1)	22
2.3.10 SATA Power header (SATA_PWR1).....	22
2.3.11 Power connector (PWR1)	23
2.3.12 Low pin count interface (JLPC1).....	23
2.3.13 LVDS connector (JLVDS1)	24
2.3.14 On-board header for USB2.0 (JUSB1)	25
2.3.15 EC Debug connector (JEC_ROM1).....	25
2.3.16 Serial port 1 in RS-422/485 mode (J422_485)	26
2.3.17 Miscellaneous setting connector (JFP1).....	26
2.3.18 BIOS SPI header (BIOS_SPI1).....	27
2.3.19 PC Buzzer header (JBZ1).....	27
2.3.20 Battery connector (BT1).....	28
2.3.21 Audio connector (JAUDIO1)	28
2.3.21.1 Signal Description – Audio connector (JAUDIO1).....	28
3. BIOS Setup	29
3.1 Introduction	30
3.2 Starting Setup	30

ECM-APL User's Manual

3.3	Using Setup	31
3.4	Getting Help	32
3.5	In Case of Problems	32
3.6	BIOS setup	33
3.6.1	Main Menu	33
3.6.1.1	System Language	34
3.6.1.2	System Date	34
3.6.1.3	System Time	34
3.6.2	Advanced Menu	34
3.6.2.1	Trusted Computing	35
3.6.2.2	APCI Settings	35
3.6.2.3	IT8528 Super IO Configuration	37
3.6.2.3.1	Serial Port 1 Configuration	38
3.6.2.3.2	Serial Port 2 Configuration	38
3.6.2.3.3	Serial Port 3 Configuration	39
3.6.2.3.4	Serial Port 4 Configuration	39
3.6.2.3.5	Serial Port 5 Configuration	40
3.6.2.3.6	Serial Port 6 Configuration	40
3.6.2.4	H/W Monitor	41
3.6.2.5	S5 RTC Wake Settings	41
3.6.2.6	Serial Port Console Redirection	42
3.6.2.6.1	Legacy Console Redirection Settings	42
3.6.2.7	CPU Configuration	43
3.6.2.7.1	Socket 0 CPU Information	44
3.6.2.7.2	CPU Power Management Configuration	45
3.6.2.8	Network Stack Configuration	46
3.6.2.9	CSM Configuration	46
3.6.2.10	NVMe Configuration	47
3.6.2.11	USB Configuration	47
3.6.2.12	Security Configuration	48
3.6.3	Chipset	49
3.6.3.1	North Bridge	49
3.6.3.2	South Bridge	50
3.6.3.3	Uncore Configuration	51
3.6.3.4	South Cluster Configuration	52
3.6.3.4.1	HD-Audio Configuration	53
3.6.3.4.2	PCI Express Configuration	53
3.6.3.4.2.1	PCI Express Root Port 3(i210/211)	54
3.6.3.4.2.2	PCI Express Root Port 4(i210/211)	55
3.6.3.4.2.3	PCI Express Root Port 5(mPCIe)	56

- 3.6.3.4.2.4 PCI Express Root Port 6(M.2)..... 57
- 3.6.3.4.3 SATA Drivers..... 58
- 3.6.3.4.4 USB Configuration..... 59
- 3.6.4 Security..... 60
 - 3.6.4.1 Secure Boot..... 61
 - 3.6.4.1.1 Key Management 62
- 3.6.5 Boot 62
- 3.6.6 Save and exit..... 63
 - 3.6.6.1 Save Changes and Reset..... 64
 - 3.6.6.2 Discard Changes and Reset..... 64
 - 3.6.6.3 Restore Defaults 64
 - 3.6.6.4 Launch EFI Shell from filesystem device 64
- 4. Drivers Installation.....65**
 - 4.1 Install Chipset Driver66
 - 4.2 Install TXE Driver67
 - 4.3 Install VGA Driver.....68
 - 4.4 Install Audio Driver (For Realtek ALC888S).....70
 - 4.5 Install Ethernet Driver.....71
- 5. Mechanical Drawing73**

1. Getting Started

1.1 Safety Precautions

Warning!



Always completely disconnect the power cord from your chassis whenever you work with the hardware. Do not make connections while the power is on. Sensitive electronic components can be damaged by sudden power surges. Only experienced electronics personnel should open the PC chassis.

Caution!



Always ground yourself to remove any static charge before touching the CPU card. Modern electronic devices are very sensitive to static electric charges. As a safety precaution, use a grounding wrist strap at all times. Place all electronic components in a static-dissipative surface or static-shielded bag when they are not in the chassis.

1.2 Packing List

Before you begin installing your single board, please make sure that the following materials have been shipped:

- 1 x 3.5" ECM-APL Micro Module
- 1 x Cable set contains the followings:
 - 1 x Serial ATA cable (7-pin, standard)
 - 1 x Wire SATA power cable (15-pin, 2P/2.0mm)
 - 1 x Flat Cable 9P(M)-PHD (10P/2.0mm)
- 3M foam (VHB-4622 10mm*20mm*1.1mm)
- 1 x CPU Heatsink or Cooler(depend on operating temperature & CPU SKU)



If any of the above items is damaged or missing, contact your retailer.

1.3 Document Amendment History

Revision	Date	By	Comment
1 st	December 2016	Avalue	Initial Release
2 nd	March 2017	Avalue	Add JLVDS1 and JBKL1 matching connector
3 rd	September 2019	Avalue	Update System Specifications
4 th	December 2019	Avalue	Update System Specifications
5 th	July 2020	Avalue	Update Packing List
6 th	March 2022	Avalue	Update System Specifications

1.4 Manual Objectives

This manual describes in details Avalue Technology ECM-APL Single Board.

We have tried to include as much information as possible but we have not duplicated information that is provided in the standard IBM Technical References, unless it proved to be necessary to aid in the understanding of this board.

We strongly recommend that you study this manual carefully before attempting to set up ECM-APL or change the standard configurations. Whilst all the necessary information is available in this manual we would recommend that unless you are confident, you contact your supplier for guidance.

Please be aware that it is possible to create configurations within the CMOS RAM that make booting impossible. If this should happen, clear the CMOS settings, (see the description of the Jumper Settings for details).

If you have any suggestions or find any errors regarding this manual and want to inform us of these, please contact our Customer Service department with the relevant details.

1.5 System Specifications

System	
CPU	Onboard Intel® Pentium®/Celeron®/Atom™ SoC BGA Processor (Apollo Lake Platform)
BIOS	AMI BIOS, 128 Mbit SPI Flash ROM
System Chipset	Apollo SoC integrated
I/O Chip	EC (ITE IT8528VG), E3900 Series CPU use EC (ITE IT8528VG I) for WT
System Memory	One 204-pin DDR3L SODIMM Socket, Supports 4G/8G & Up to 8GB DDR3L 1600MTs SDRAM (Non-ECC)
Storage	1 x M.2 B key (2242 support SATA/USB interface & with Micro SIM card connector) for SSD/3G/4G
Watchdog Timer	H/W Reset, 1sec. ~ 65535sec and 1sec. or 1min./step
H/W Status Monitor	CPU & system temperature monitoring Voltages monitoring
Expansion	1 x Full-Size Mini PCI Express Mini Card (for PCIe & USB2.0)
Built-in Touch screen (optional)	EETI ETP-CP-MER4485XRU With 5-pin 2.0mm Box Header (Can be Selected to Support 4/ 5Wire Touch Screen)
I/O	
MIO	1 x SATA III 1 x DB-9 male connector for COM1 supports RS232/422/485 (selectable by BIOS, w/ Auto Flow)
USB	4 x USB3.0 (Edge connectors), 1 x USB 2.0 (Pin header)
GPIO	8-bit
Others	LPC, SPI
Display	
Chipset	Intel® Apollo Lake SoC Processor integrated Gen9 LP graphics
Resolution	LVDS: 1920 x 1080@60Hz Dual HDMI: 3840 x 2160@30Hz
Multiple Display	Dual HDMI+LVDS
HDMI	HDMI x 1.4b
LCD Interface	Dual channel 18/24-bit LVDS (via 7511B)
Audio	
AC97 Codec	Realtek ALC888S
Audio Amp	Mic-In, Line-In and Line-Out
Ethernet	

ECM-APL User's Manual

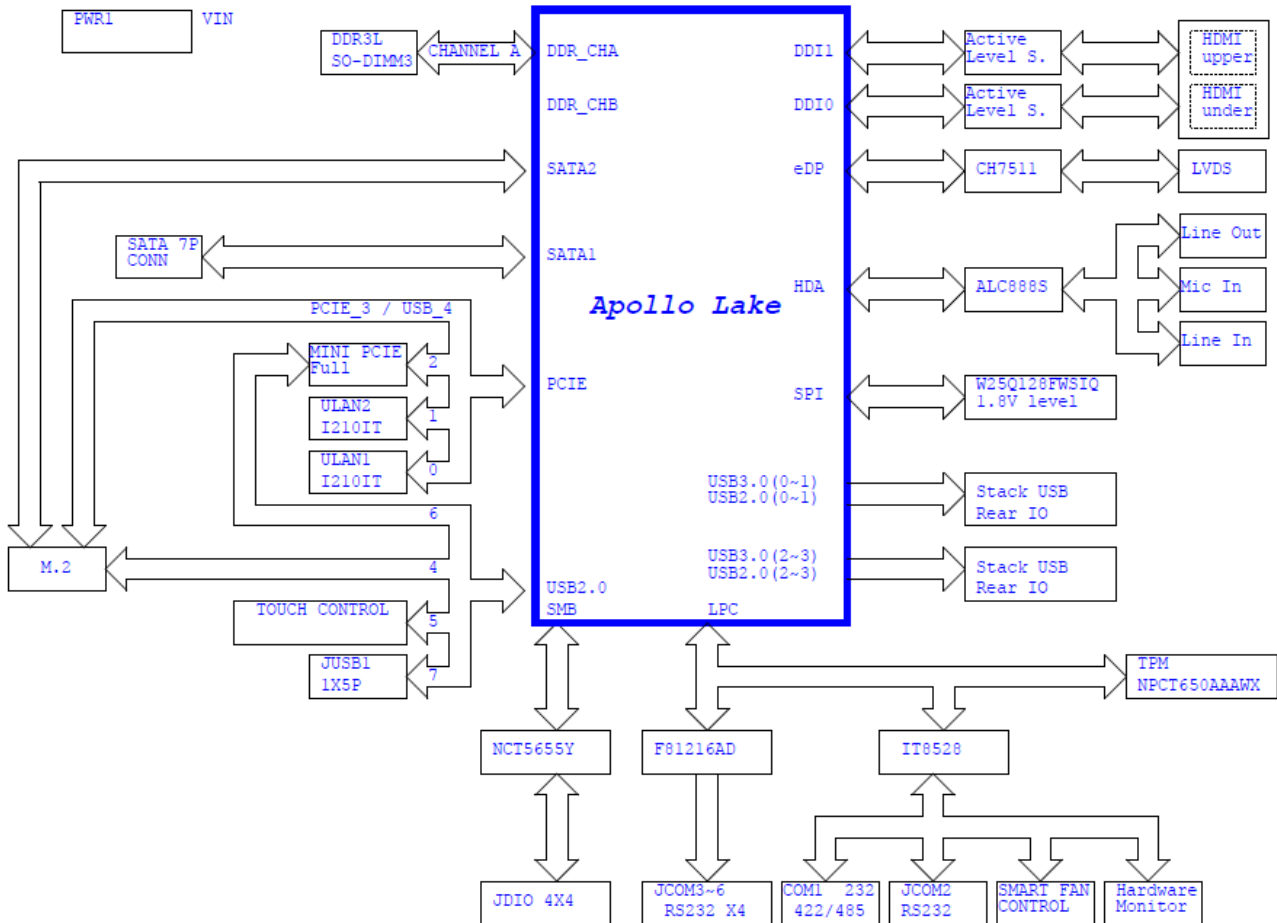
LAN Chip	2 x Intel I211AT GbE controller (co-layout I210AT) (E3900 Series CPU use Intel I210IT for WT)
Ethernet Interface	10/100/1000 Base-Tx compatible
Internal I/O Connectors	
Fan	CPU_FAN1 4pin 2.5mm wafer header
Buzzer	With Pin header
CMOS Battery	CR2032
Power On	AX/ATX selectable by jumper
COM	5 x RS232 for COM2/3/4/5/6
Rear I/O Connectors	
USB	4 x USB3.0
LAN	2 x RJ-45
HDMI	HDMI x 2 38P 90D(F) w/Flange BLK
LED	Stack LED indicator for power/HDD
Mechanical & Environmental	
Power Requirement	+12V ~ +26V
ACPI	Single power ATX Support S0, S3, S4, S5 ACPI 5.0 Compliant
Power Type	AT / ATX
Operating Temp.	0°C ~ 60°C (32°F ~ 140°F) -40°C ~ 85°C (-40°F ~ 185°F) for I-series CPU
Storage Temp.	-40°C ~ 85°C (-40°F ~ 167°F)
Operating Humidity	0% ~ 90% relative humidity, non-condensing
Size (L x W)	5.7" x 4" (146mm x 101mm)
Weight	0.44lbs (0.2kg)
OS support	OS information: Win10 (64) /Linux/Android (listed in accordance with Intel document)



Note: Specifications are subject to change without notice.

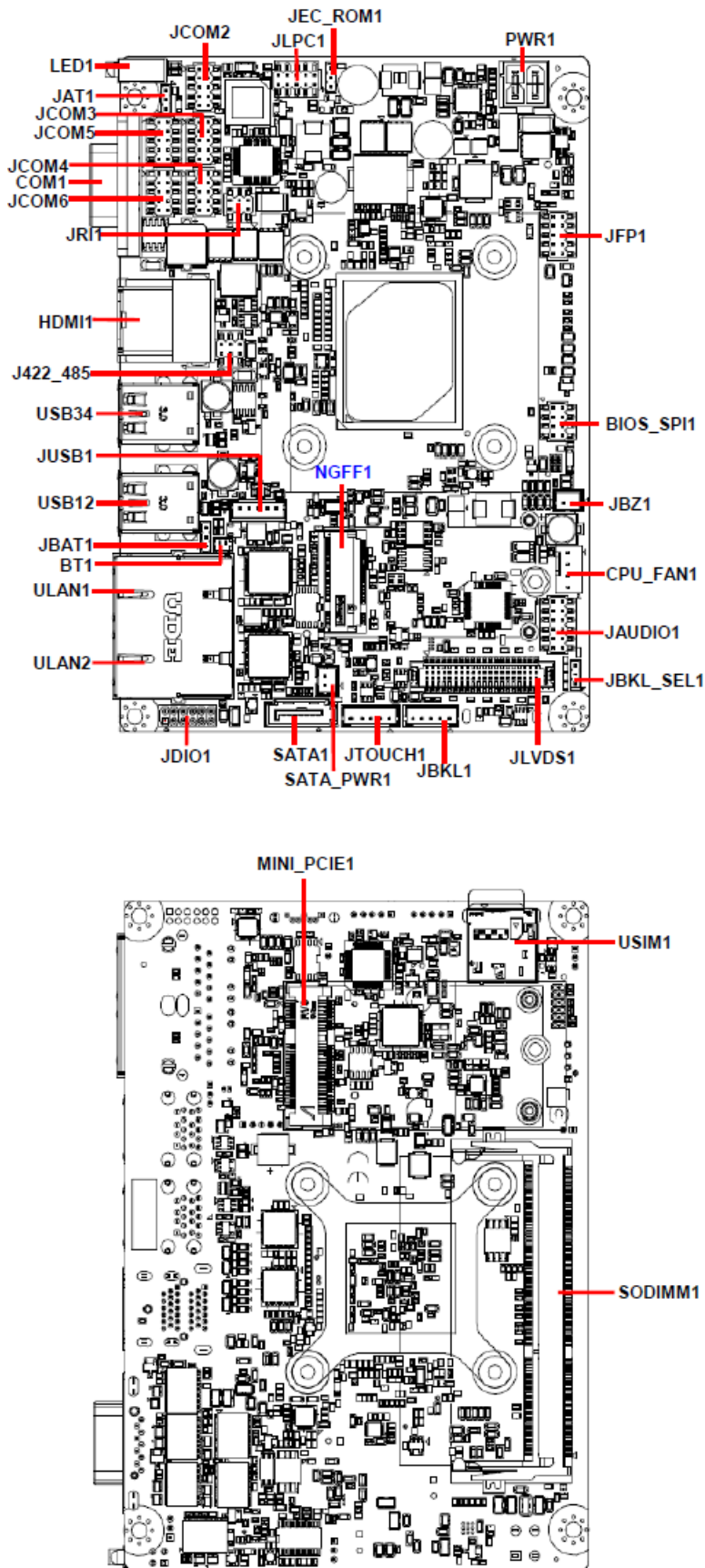
1.6 Architecture Overview—Block Diagram

The following block diagram shows the architecture and main components of ECM-APL.



2. Hardware Configuration

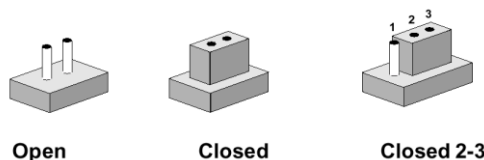
2.1 Product Overview



2.2 Jumper and Connector List

You can configure your board to match the needs of your application by setting jumpers. A jumper is the simplest kind of electric switch.

It consists of two metal pins and a small metal clip (often protected by a plastic cover) that slides over the pins to connect them. To “close” a jumper you connect the pins with the clip. To “open” a jumper you remove the clip. Sometimes a jumper will have three pins, labeled 1, 2, and 3. In this case, you would connect either two pins.



The jumper settings are schematically depicted in this manual as follows:



A pair of needle-nose pliers may be helpful when working with jumpers. Connectors on the board are linked to external devices such as hard disk drives, a keyboard, or floppy drives. In addition, the board has a number of jumpers that allow you to configure your system to suit your application.

If you have any doubts about the best hardware configuration for your application, contact your local distributor or sales representative before you make any changes.

The following tables list the function of each of the board’s jumpers and connectors.

Jumpers

Label	Function	Note
JBAT1	Clear CMOS	3 x 1 header, pitch 2.00 mm
JRI1	Serial port 1 pin9 signal select	3 x 2 header, pitch 2.00 mm
JAT1	AT/ ATX Input power select	3 x 1 header, pitch 2.00 mm
JBKL_SEL1	LCD backlight brightness adjustment	3 x 1 header, pitch 2.00 mm

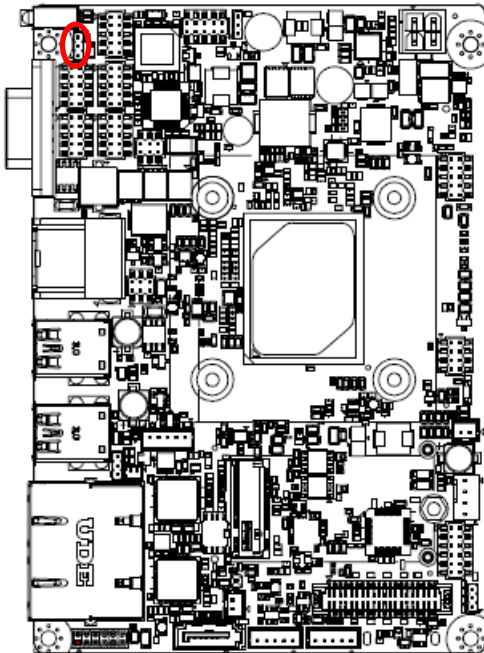
Connectors

Label	Function	Note
BT1	Battery connector	2 x 1 wafer, pitch 1.25 mm
CPU_FAN1	CPU fan connector	4 x 1 wafer, pitch 2.54 mm
JAUDIO1	Audio connector	6 x 2 header, pitch 2.00 mm
JBKL1	LCD inverter connector	5 x 1 wafer, pitch 2.00 mm

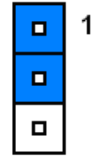
		Matching Connector: JST PHR-5
J422_485	Serial port 1 in RS-422/485 mode	3 x 2 header, pitch 2.00 mm
COM1	Serial port 1 connector	D-sub 9-pin, male Note : COM1 support RS422/485 by BIOS setting
JCOM2/3/4/5/6	Serial port 2/3/4/5/6 connector	5 x 2 header, pitch 2.00 mm
JDIO1	General purpose I/O connector	6 x 2 header, pitch 2.00 mm
JFP1	Miscellaneous setting connector	5 x 2 header, pitch 2.00 mm
JLPC1	Low pin count interface	5 x 2 header, pitch 2.00 mm
JLVDS1	LVDS connector	20 x 2 wafer, pitch 1.25 mm Matching Connector: Hirose DF13-40DS-1.25C
JTOUCH1	Touch Panel connector	5 x 1 wafer, pitch 2.00 mm
USB12/34	On-board connector for USB3.0 x 4	
JUSB1	On-board header for USB2.0	5 x 1 wafer, pitch 2.00 mm
JEC_ROM1	EC Debug connector	3 x 1 header, pitch 2.00 mm
ULAN1/2	RJ-45 Ethernet connector 1/2	
LED1	HDD/Power LED indicator	
PWR1	Power connector	2 x 2 wafer, pitch 4.20 mm
JBZ1	PC Buzzer header	2 x 1 wafer, pitch 2.00 mm
SATA_PWR1	SATA power header	2 x 1 wafer, pitch 2.00 mm
SATA1	Serial ATA connector 1	
HDMI1	HDMI connector	
BIOS_SPI1	BIOS SPI header	4 x 2 header, pitch 2.00 mm
NGFF1	M.2 B key slot	
MINI_PCIE1	Mini-PCI connector	
SO_DIMM1	DDR3 SODIMM connector	
USIM1	Sim card slot	

2.3 Setting Jumpers & Connectors

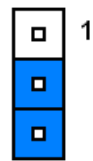
2.3.1 AT/ ATX Input power select (JAT1)



AT*

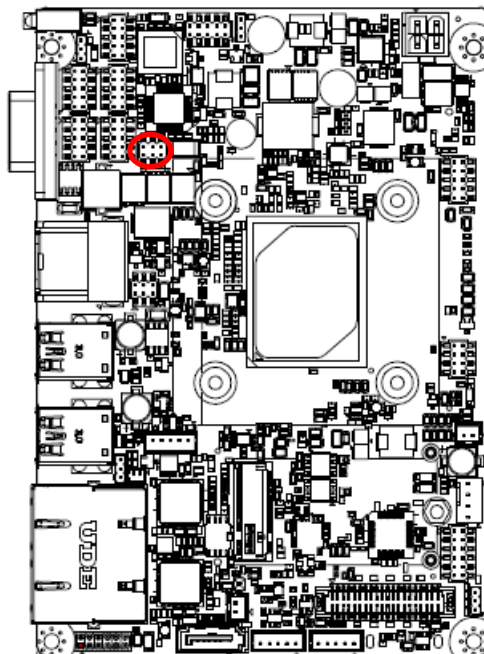


ATX

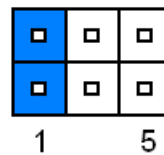


* Default

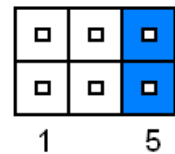
2.3.2 Serial port 1 pin9 signal select (JRI1)



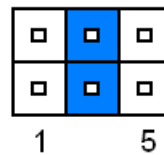
Ring*



+12V

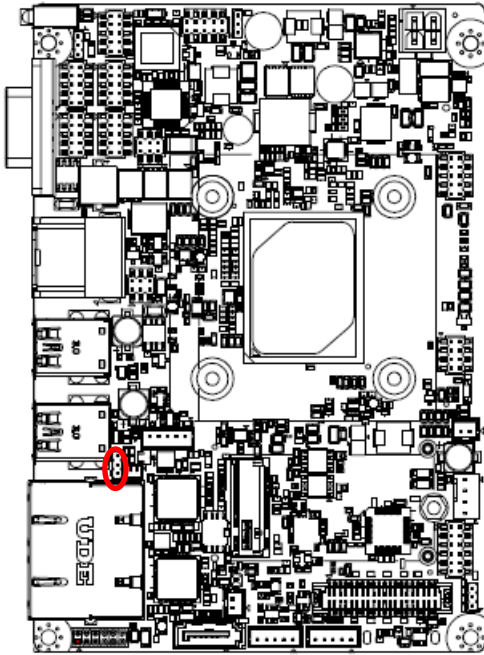


+5V

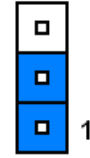


* Default

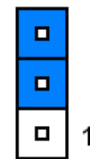
2.3.3 Clear CMOS (JBAT1)



Protect*

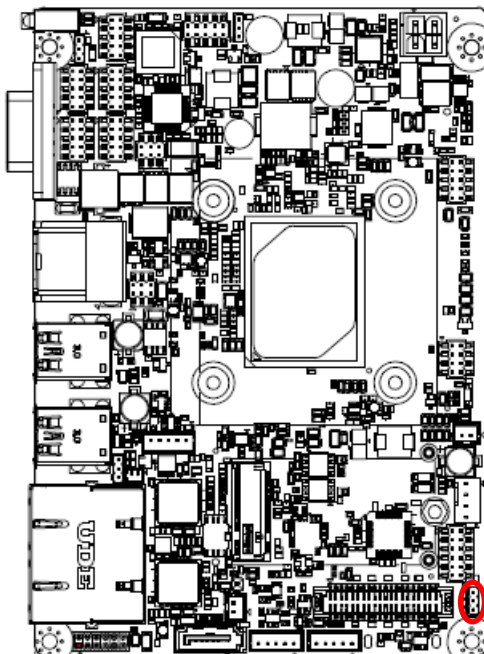


Clear CMOS

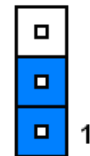


* Default

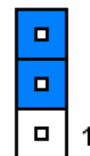
2.3.4 LCD backlight brightness adjustment (JBKL_SEL1)



PWM Mode*

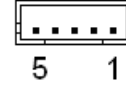
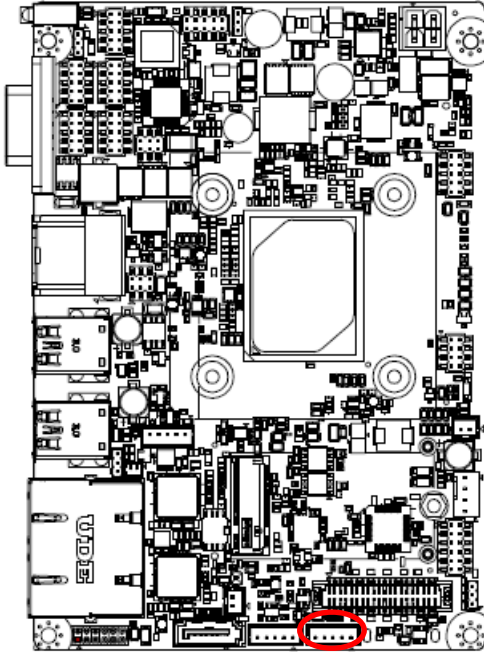


DC Mode



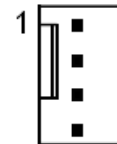
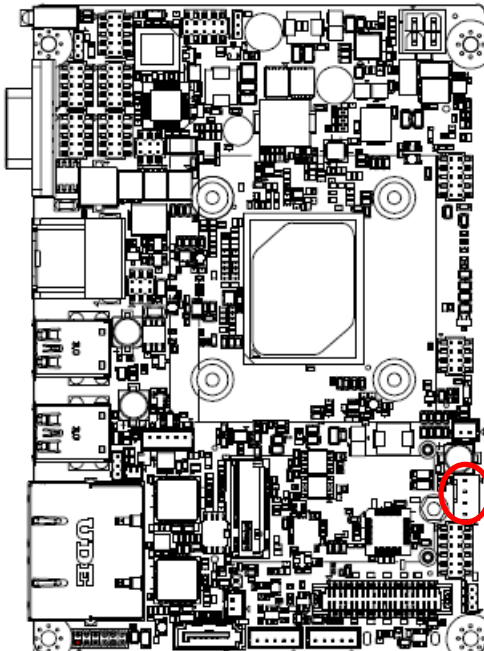
* Default

2.3.5 LCD Inverter connector (JBKL1)



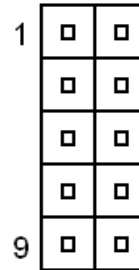
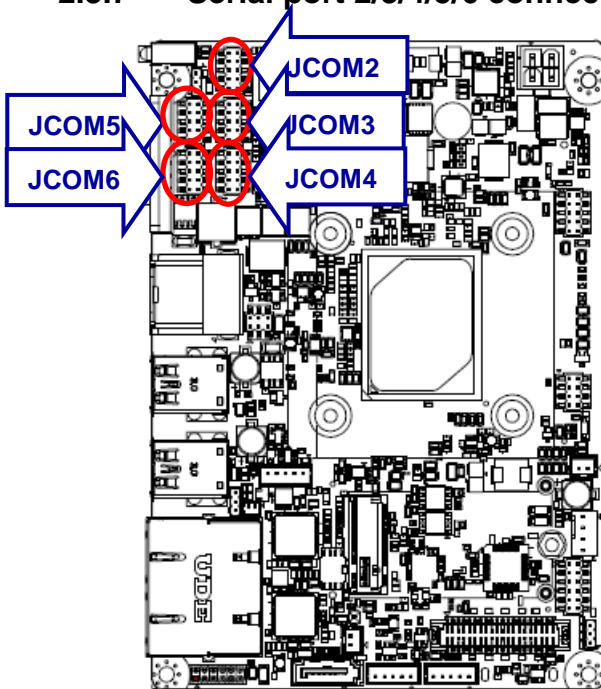
Signal	PIN
+12V	1
GND	2
BKLEN	3
VBRIGHT	4
+5V	5

2.3.6 CPU fan connector (CPU_FAN1)



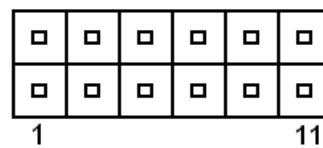
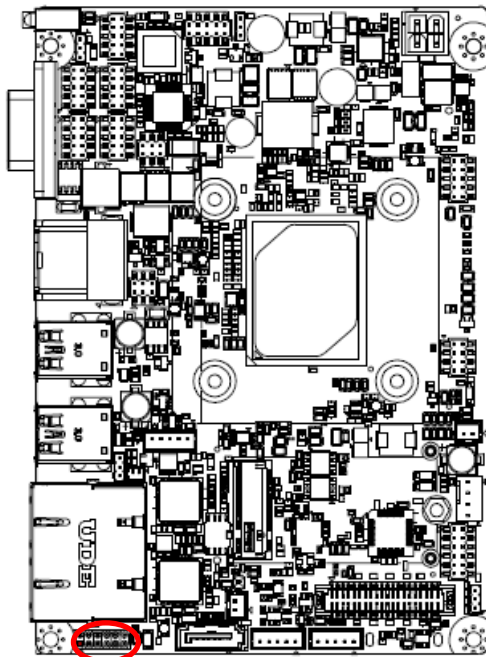
Signal	PIN
GND	1
+12V	2
EC_TACH0	3
FAN_PWM0	4

2.3.7 Serial port 2/3/4/5/6 connector (JCOM2/3/4/5/6)



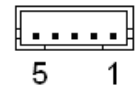
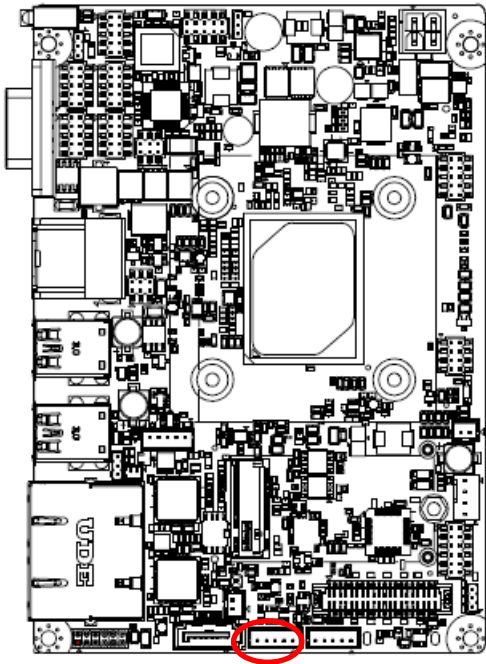
Signal	PIN	PIN	Signal
COM_DCD#	1	2	COM_RXD
COM_TXD	3	4	COM_DTR#
GND	5	6	COM_DSR#
COM_RTS#	7	8	COM_CTS#
COM_RI#	9	10	NC

2.3.8 General purpose I/O connector (JDIO1)



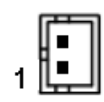
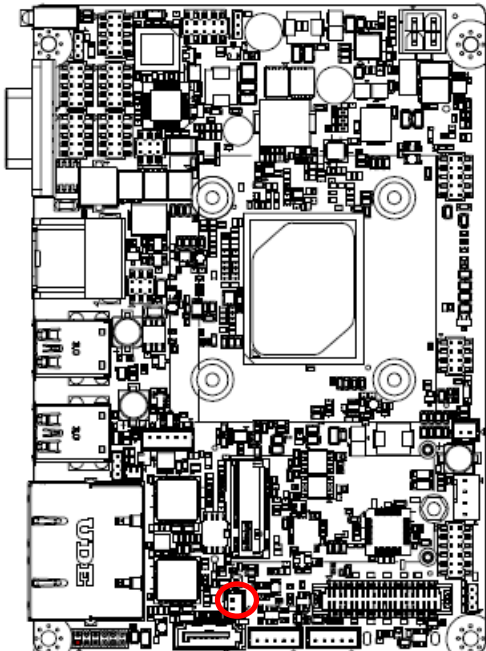
Signal	PIN	PIN	Signal
DIO_GP20	1	2	DIO_GP10
DIO_GP21	3	4	DIO_GP11
DIO_GP22	5	6	DIO_GP12
DIO_GP23	7	8	DIO_GP13
SMB_SCL_S0	9	10	SMB_SDA_S0
GND	11	12	+5V

2.3.9 Touch Panel connector (JTOUCH1)



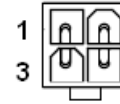
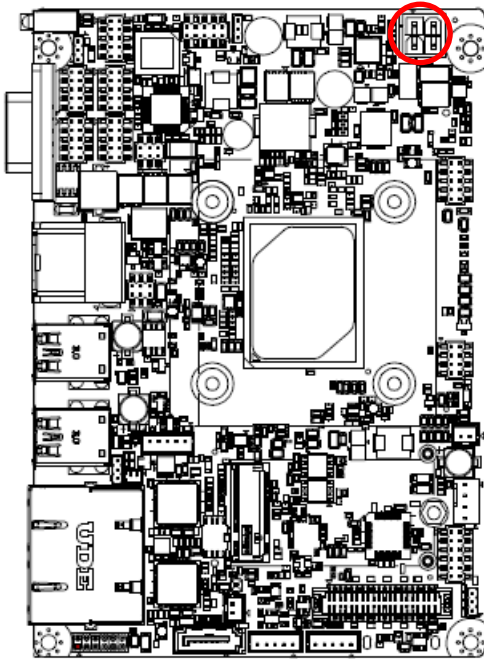
Signal	PIN
THX+	1
THX-	2
THPROBE_R	3
THY+	4
THY-	5

2.3.10 SATA Power header (SATA_PWR1)



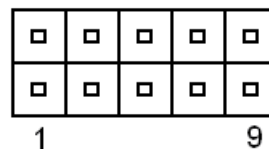
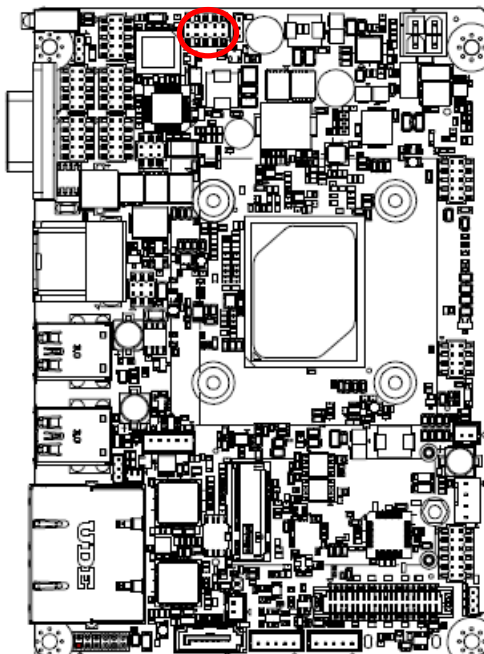
Signal	PIN
+5V	2
GND	1

2.3.11 Power connector (PWR1)



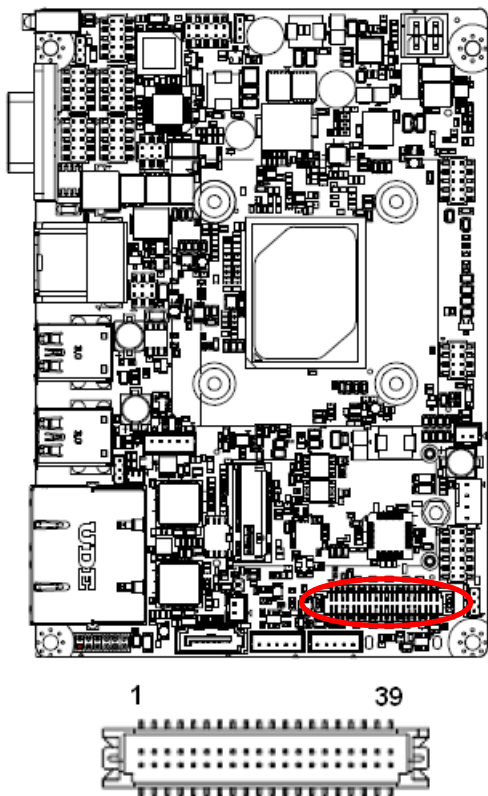
Signal	PIN	PIN	Signal
GND	1	2	GND
+26V_VIN_VIN	3	4	+26V_VIN_VIN

2.3.12 Low pin count interface (JLPC1)



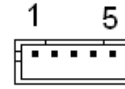
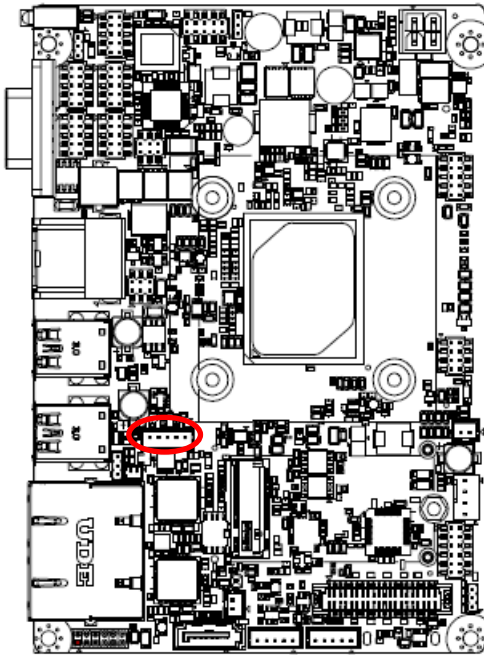
Signal	PIN	PIN	Signal
LPC_AD0	1	2	+3.3V
LPC_AD1	3	4	PLT_RST_BUF#
LPC_AD2	5	6	LPC_FRAME#
LPC_AD3	7	8	LPC_PORT80_CLK
LPC_SERIRQ	9	10	GND

2.3.13 LVDS connector (JLVDS1)



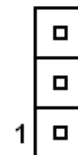
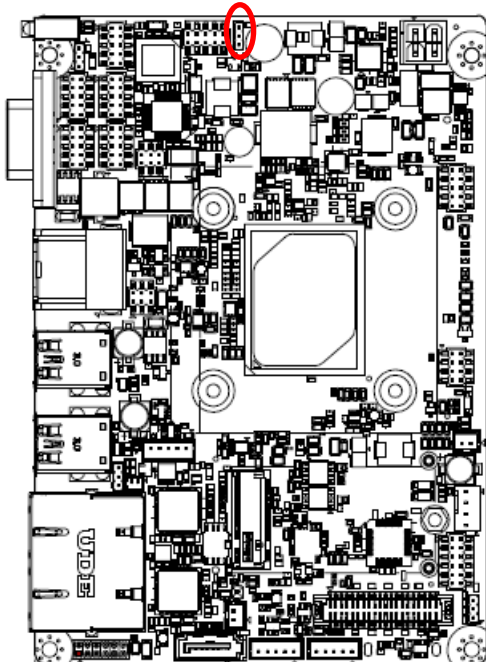
Signal	PIN	PIN	Signal
+5V	2	1	+3.3V
+5V	4	3	+3.3V
NC	6	5	NC
GND	8	7	GND
LVDS_DATA0_P	10	9	LVDS_DATA1_P
LVDS_DATA0_N	12	11	LVDS_DATA1_N
GND	14	13	GND
LVDS_DATA2_P	16	15	LVDS_DATA3_P
LVDS_DATA2_N	18	17	LVDS_DATA3_N
GND	20	19	GND
LVDS_DATA4_P	22	21	LVDS_DATA5_P
LVDS_DATA4_N	24	23	LVDS_DATA5_N
GND	26	25	GND
LVDS_DATA6_P	28	27	LVDS_DATA7_P
LVDS_DATA6_N	30	29	LVDS_DATA7_N
GND	32	31	GND
LVDS_CLK1_P	34	33	LVDS_CLK2_P
LVDS_CLK1_N	36	35	LVDS_CLK2_N
GND	38	37	GND
+12V	40	39	+12V

2.3.14 On-board header for USB2.0 (JUSB1)



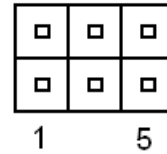
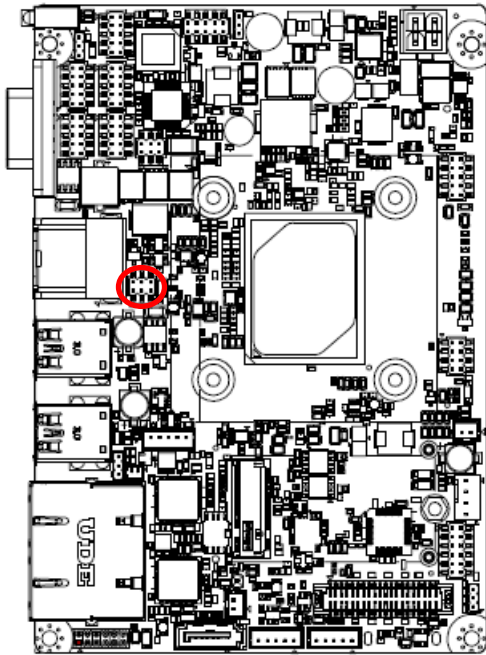
Signal	PIN
+5VSB	1
USB_R_DN7	2
USB_R_DP7	3
GND	4
GND	5

2.3.15 EC Debug connector (JEC_ROM1)



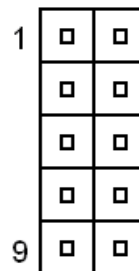
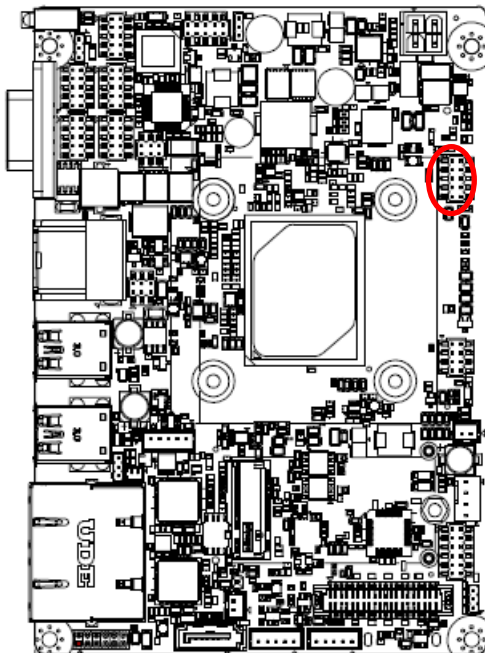
Signal	PIN
GND	3
EC_SMDAT_DEBUG	2
EC_SMCLK_DEBUG	1

2.3.16 Serial port 1 in RS-422/485 mode (J422_485)



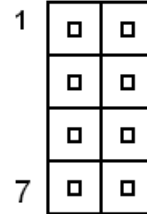
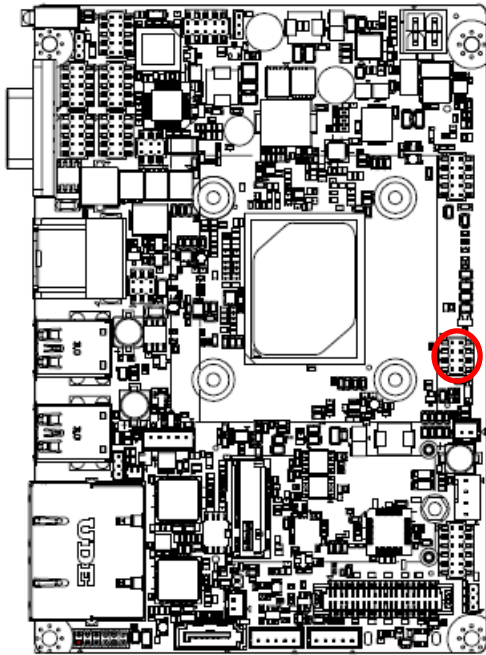
Signal	PIN	PIN	Signal
485TX2-	1	2	485TX2+
485RX2+	3	4	485RX2-
+5V	5	6	GND

2.3.17 Miscellaneous setting connector (JFP1)



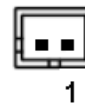
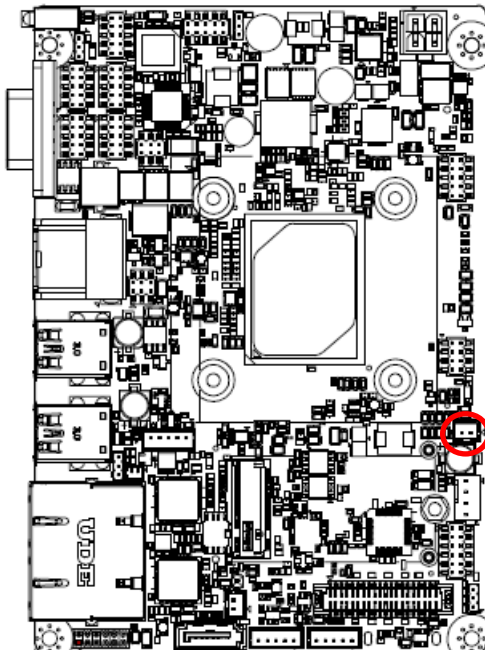
Signal	PIN	PIN	Signal
PWR_BTN_IN_EC#	1	2	GND
PMU_RSTBTN#	3	4	GND
FP_PWR_LED+	5	6	PWR_LED#
HDD_LED#	7	8	+5V
CASE_OPEN#	9	10	GND

2.3.18 BIOS SPI header (BIOS_SPI1)



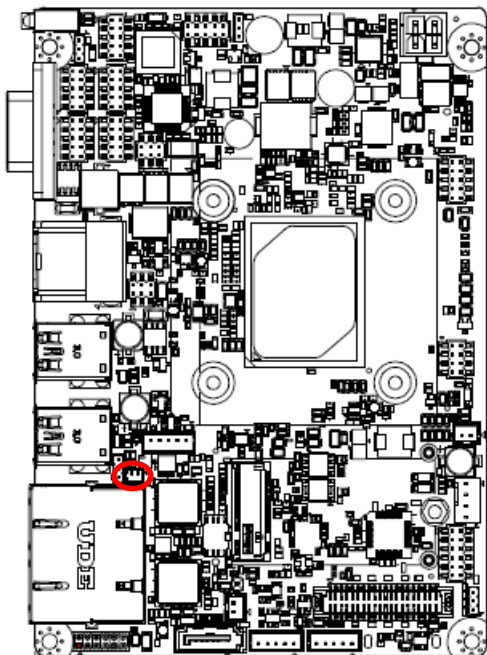
Signal	PIN	PIN	Signal
+1.8VSB	1	2	GND
SPI_CS#0	3	4	CPI_CLK
SPI_MISO	5	6	SPI_MOSI
SPI_HOLD#	7	8	SPI_WP#

2.3.19 PC Buzzer header (JBZ1)



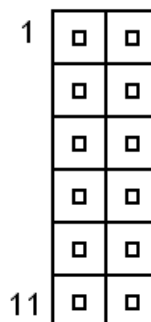
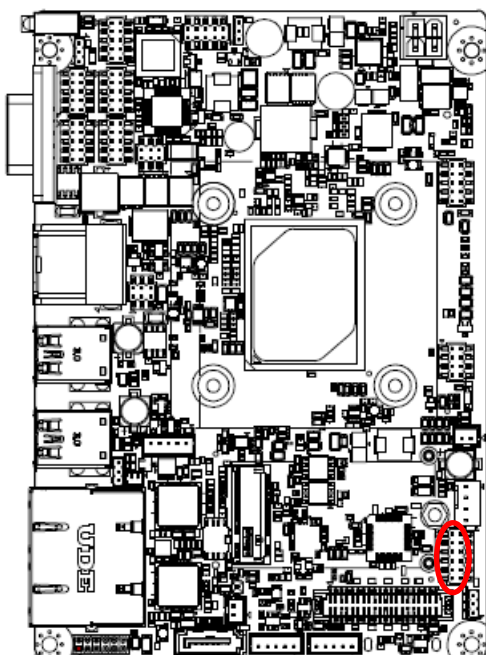
Signal	PIN
SOC_SPKR_R	1
+5V	2

2.3.20 Battery connector (BT1)



Signal	PIN
+RTCBATT	1
GND	2

2.3.21 Audio connector (JAUDIO1)



Signal	PIN	PIN	Signal
FRONT-R-OUT	1	2	FRONT-L-OUT
HD_AGND	3	4	HD_AGND
LINE1-R-IN	5	6	LINE1-L-IN
MIC1-R-IN	7	8	MIC1-L-IN
FRONT-JD	9	10	LINE1-JD
MIC1-JD	11	12	HD_AGND

2.3.21.1 Signal Description – Audio connector (JAUDIO1)

Signal	Signal Description
LINE1-JD	AUDIO IN (LINE_RIN/LIN)sense pin
FRONT-JD	AUDIO Out(ROUT/LOUT) sense pin
MIC1-JD	MIC IN (MIC_RIN/LIN) sense pin

3. BIOS Setup

3.1 Introduction

The BIOS setup program allows users to modify the basic system configuration. In this following chapter will describe how to access the BIOS setup program and the configuration options that may be changed.

3.2 Starting Setup

AMI BIOS™ is immediately activated when you first power on the computer. The BIOS reads the system information contained in the NVRAM and begins the process of checking out the system and configuring it. When it finishes, the BIOS will seek an operating system on one of the disks and then launch and turn control over to the operating system.

While the BIOS is in control, the Setup program can be activated in one of two ways:

By pressing or <ESC> immediately after switching the system on, or

By pressing the or <ESC> key when the following message appears briefly at the left-top of the screen during the POST (Power On Self Test).

Press or <ESC> to enter SETUP

If the message disappears before you respond and you still wish to enter Setup, restart the system to try again by turning it OFF then ON or pressing the "RESET" button on the system case. You may also restart by simultaneously pressing <Ctrl>, <Alt>, and <Delete> keys.

3.3 Using Setup

In general, you use the arrow keys to highlight items, press <Enter> to select, use the PageUp and PageDown keys to change entries, press <F1> for help and press <Esc> to quit. The following table provides more detail about how to navigate in the Setup program using the keyboard.

Button	Description
↑↓→←	Move
Enter	Select
+/-	Value
ESC	Exit
F1 key	General Help
F2 key	Previous Values
F3 key	Optimized Defaults
F4 key	Save & Exit Setup
<K>	Scroll help area upwards
<M>	Scroll help area downwards

- **Navigating Through The Menu Bar**

Use the left and right arrow keys to choose the menu you want to be in.



Note: Some of the navigation keys differ from one screen to another.

- **To Display a Sub Menu**

Use the arrow keys to move the cursor to the sub menu you want. Then press <Enter>. A “➤” pointer marks all sub menus.

3.4 Getting Help

Press F1 to pop up a small help window that describes the appropriate keys to use and the possible selections for the highlighted item. To exit the Help Window press <Esc> or <Enter> key.

3.5 In Case of Problems

If, after making and saving system changes with Setup, you discover that your computer no longer is able to boot, the AMI BIOS supports an override to the NVRAM settings which resets your system to its defaults.

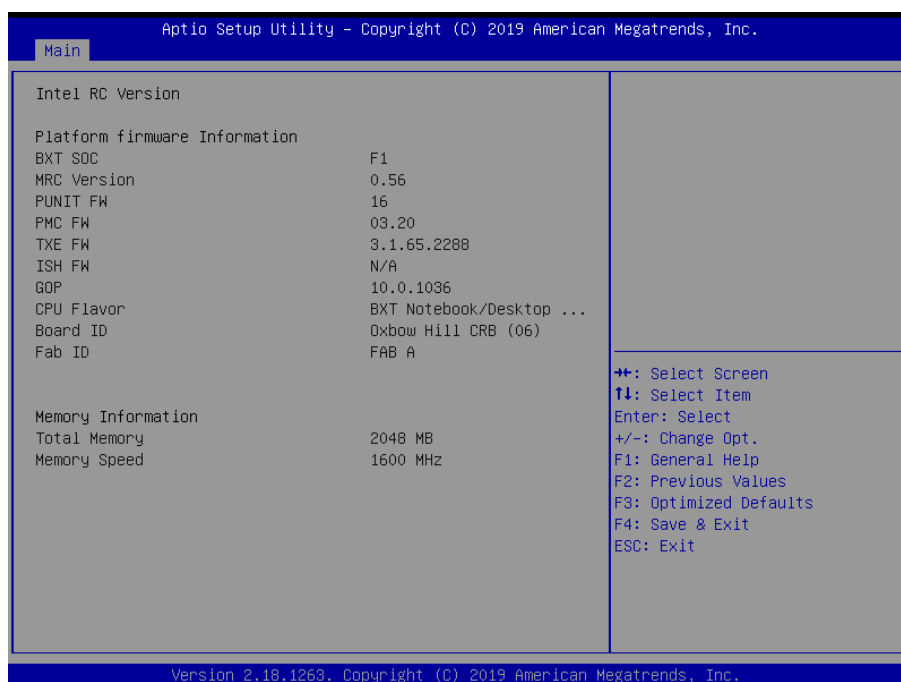
The best advice is to only alter settings which you thoroughly understand. To this end, we strongly recommend that you avoid making any changes to the chipset defaults. These defaults have been carefully chosen by both BIOS Vendor and your systems manufacturer to provide the absolute maximum performance and reliability. Even a seemingly small change to the chipset setup has the potential for causing you to use the override.

3.6 BIOS setup

Once you enter the Aptio Setup Utility, the Main Menu will appear on the screen. The Main Menu allows you to select from several setup functions and exit choices. Use the arrow keys to select among the items and press <Enter> to accept and enter the sub-menu.

3.6.1 Main Menu

This section allows you to record some basic hardware configurations in your computer and set the system clock.



ECM-APL User's Manual

3.6.1.1 System Language

This option allows choosing the system default language.

3.6.1.2 System Date

Use the system date option to set the system date. Manually enter the day, month and year.

3.6.1.3 System Time

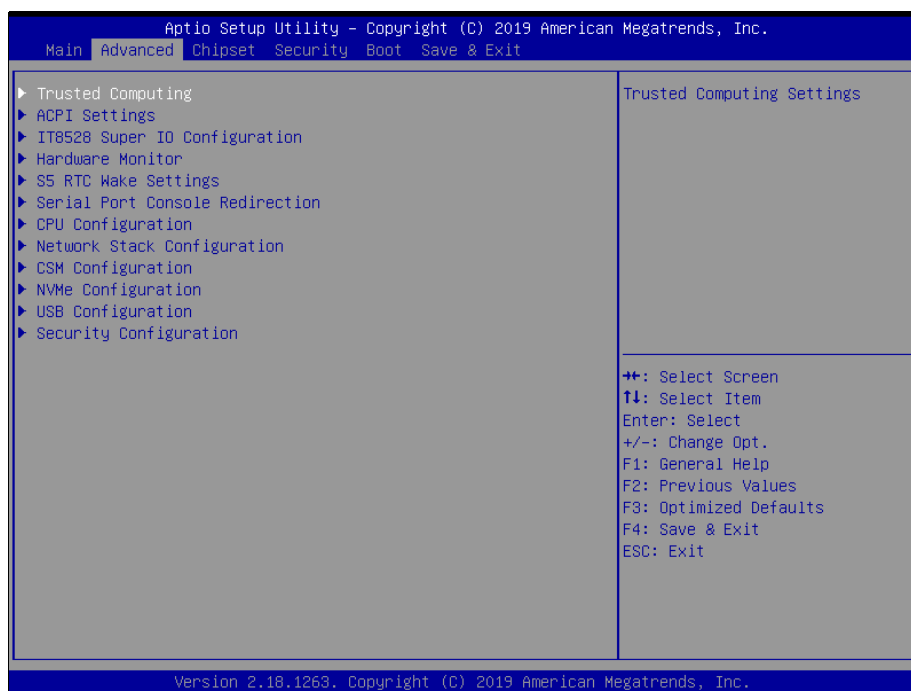
Use the system time option to set the system time. Manually enter the hours, minutes and seconds.



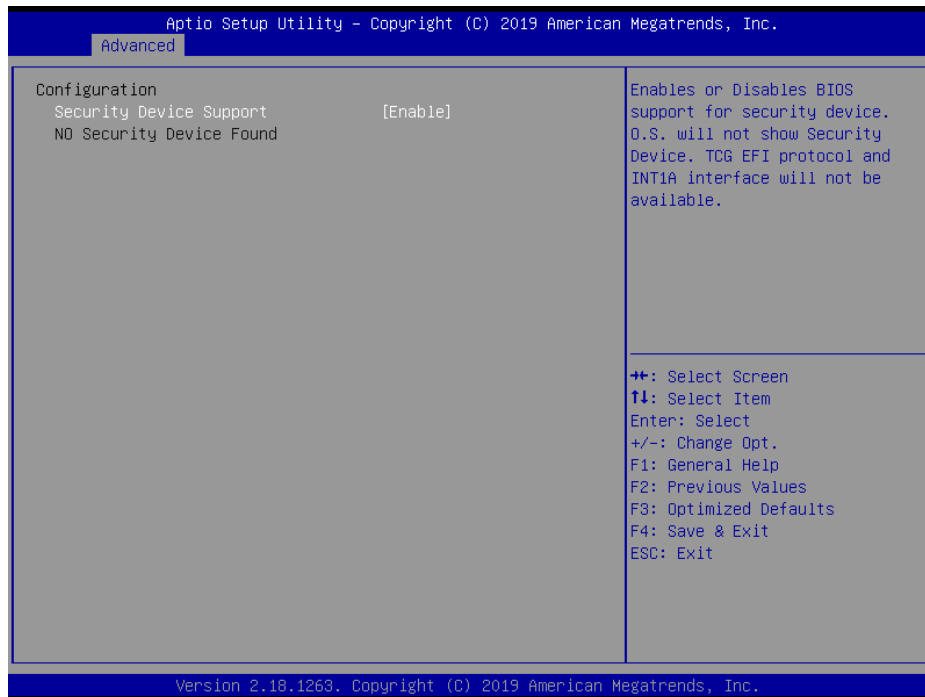
Note: The BIOS setup screens shown in this chapter are for reference purposes only, and may not exactly match what you see on your screen. Visit the Avalue website (www.avalue.com.tw) to download the latest product and BIOS information.

3.6.2 Advanced Menu

This section allows you to configure your CPU and other system devices for basic operation through the following sub-menus.



3.6.2.1 Trusted Computing



Item	Options	Description
Security Device Support	Disable, Enable[Default]	Enables or Disables BIOS support for security device. O.S. will not show Security Device. TCG EFI protocol and INT1A interface will not be available.

3.6.2.2 APCI Settings

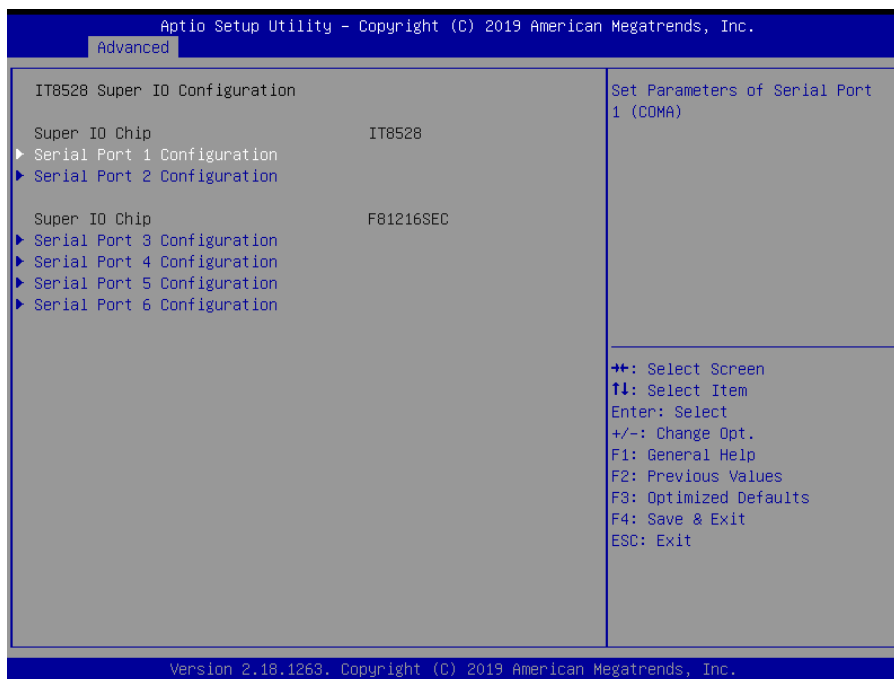


ECM-APL User's Manual

Item	Options	Description
Enable Hibernation	Disabled Enabled[Default]	Enables or Disables System ability to Hibernate (OS/S4 Sleep State). This option may be not effective with some OS.
ACPI Sleep State	Suspend Disabled, S3 (Suspend to RAM)[Default]	Select the highest ACPI sleep state the system will enter when the SUSPEND button is pressed.
ErP Function	Disabled[Default], Enabled	ErP Function (Deep S5).
Pwr-On After PWR-Fail	Off[Default] On Last state	AC loss resume.
Watch Dog	Disabled[Default], 30 sec 40 sec 50 sec 1 min 2 min 10 min 30 min	Select WatchDog.
USB Standby Power Setting	Disabled Enabled[Default]	Enabled/Disabled USB Standby Power during S3/S4/S5.
Wake Up By Ring	Disabled Enabled[Default]	Wake Up by Ring from S3/S4/S5.

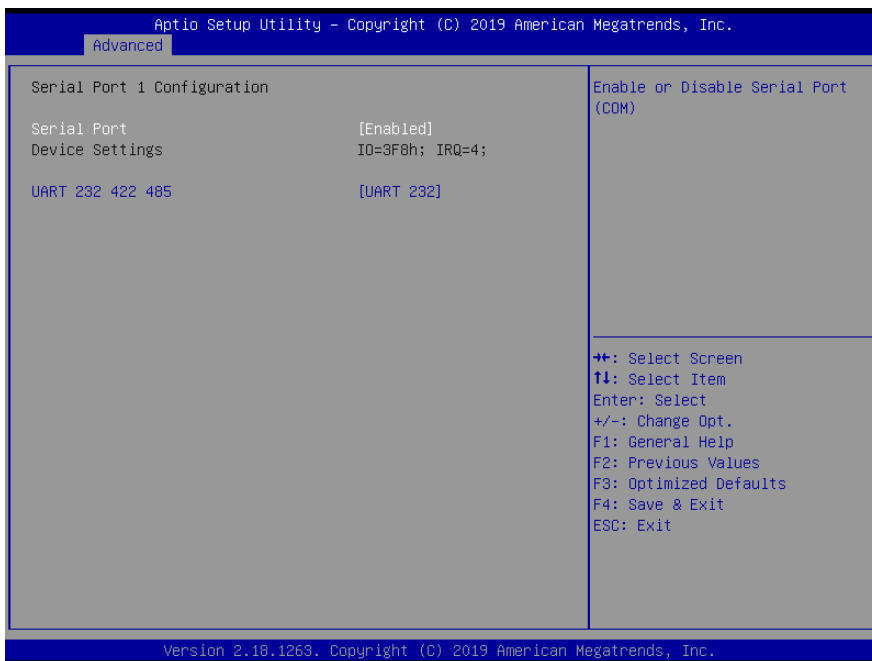
3.6.2.3 IT8528 Super IO Configuration

You can use this item to set up or change the IT8528 Super IO configuration for serial ports. Please refer to 3.6.2.3.1~ 3.6.2.3.6 for more information.



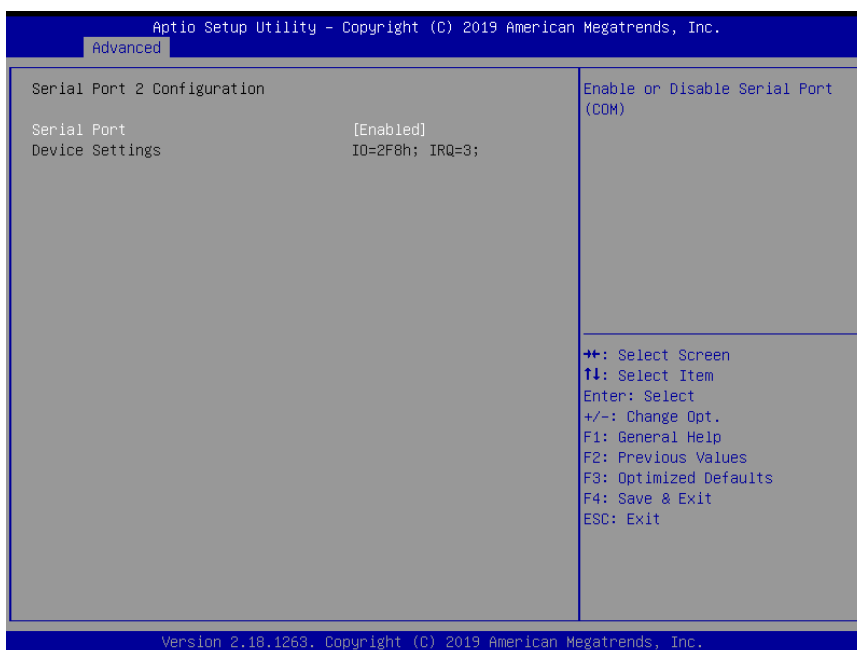
Item	Description
Serial Port 1 Configuration	Set Parameters of Serial Port 1 (COMA).
Serial Port 2 Configuration	Set Parameters of Serial Port 2 (COMB).
Serial Port 3 Configuration	Set Parameters of Serial Port 3 (COMC).
Serial Port 4 Configuration	Set Parameters of Serial Port 4 (COMD).
Serial Port 5 Configuration	Set Parameters of Serial Port 5 (COME).
Serial Port 6 Configuration	Set Parameters of Serial Port 6 (COMF).

3.6.2.3.1 Serial Port 1 Configuration



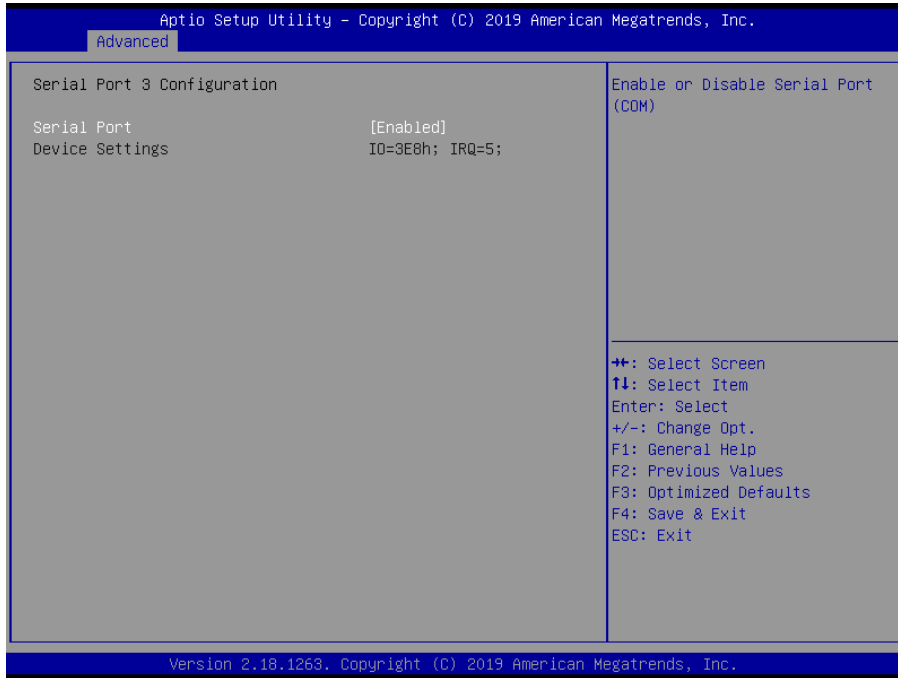
Item	Option	Description
Serial Port	Disabled Enabled [Default]	Enable or Disable Serial Port (COM).
UART 232 422 485	UART 232 [Default] UART 422 UART 485	Change the Serial Port as RS232/422/485.

3.6.2.3.2 Serial Port 2 Configuration



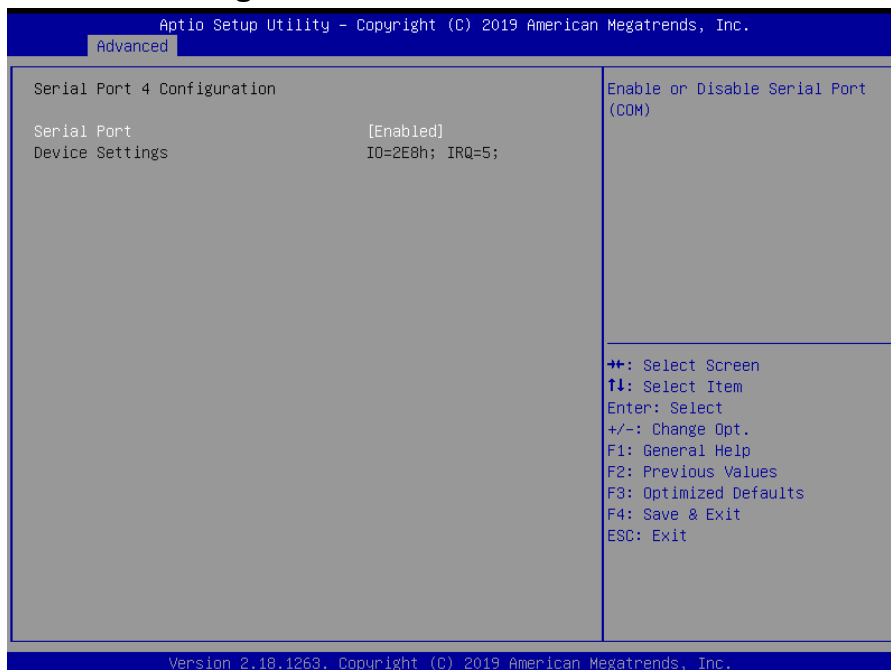
Item	Option	Description
Serial Port	Disabled Enabled[Default]	Enable or Disable Serial Port (COM).

3.6.2.3.3 Serial Port 3 Configuration



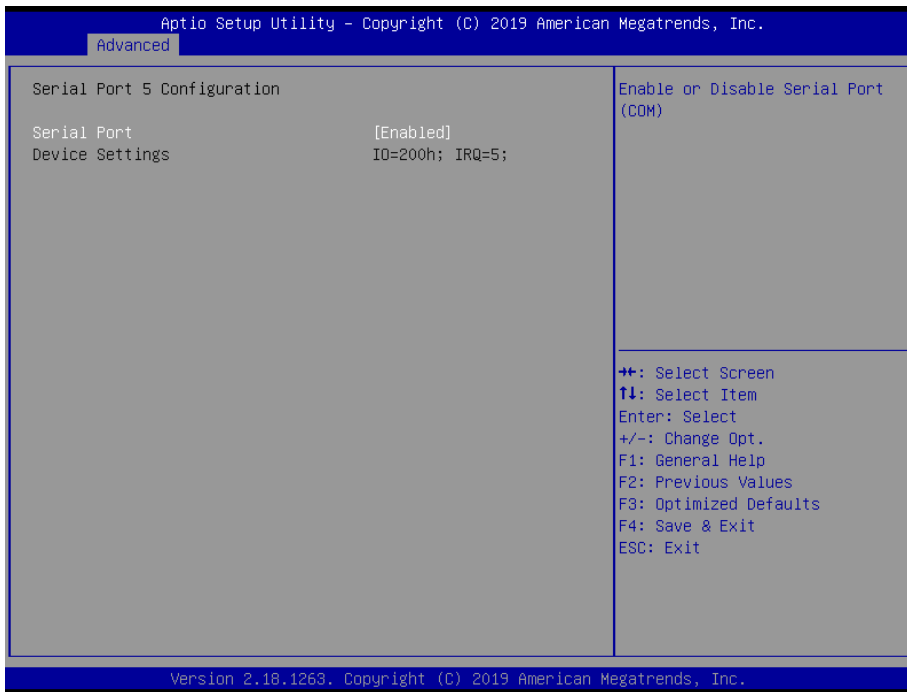
Item	Option	Description
Serial Port	Disabled Enabled[Default]	Enable or Disable Serial Port (COM).

3.6.2.3.4 Serial Port 4 Configuration



Item	Option	Description
Serial Port	Disabled Enabled[Default]	Enable or Disable Serial Port (COM).

3.6.2.3.5 Serial Port 5 Configuration



Item	Option	Description
Serial Port	Disabled Enabled[Default]	Enable or Disable Serial Port (COM).

3.6.2.3.6 Serial Port 6 Configuration



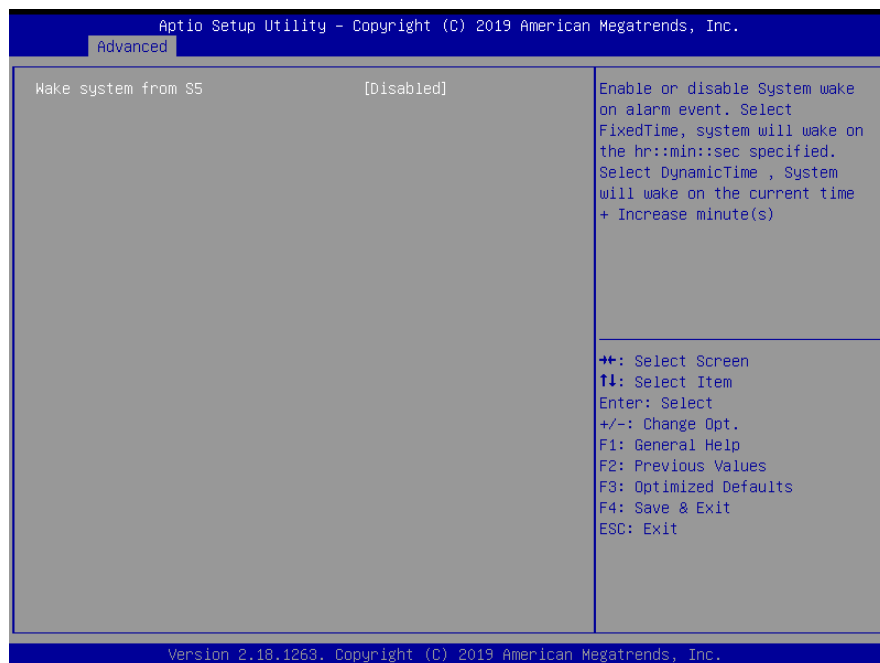
Item	Option	Description
Serial Port	Disabled Enabled[Default]	Enable or Disable Serial Port (COM).

3.6.2.4 H/W Monitor



Item	Options	Description
Smart Fan Function	Enabled, Disabled[Default]	Enables or Disables Smart Fan.

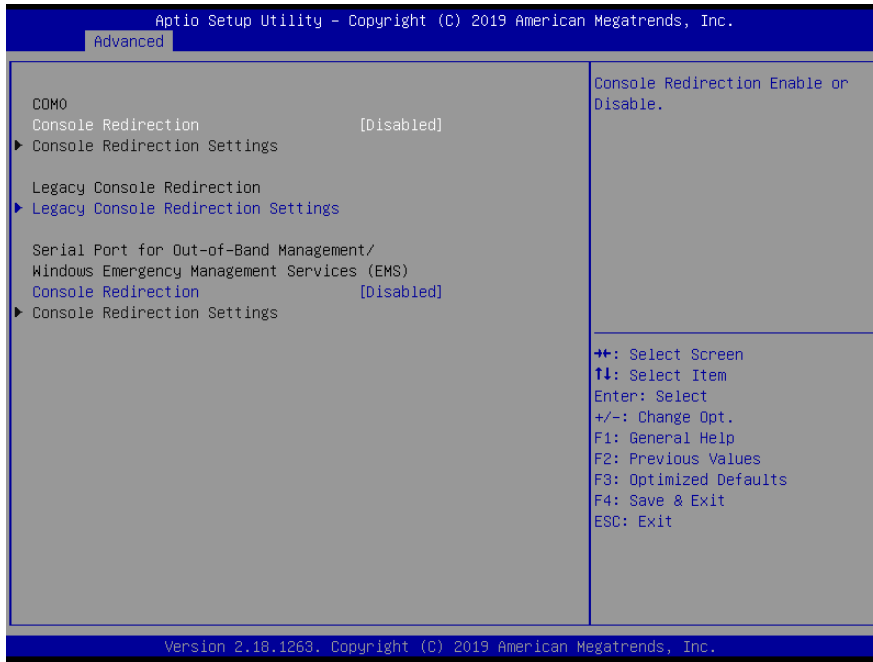
3.6.2.5 S5 RTC Wake Settings



ECM-APL User's Manual

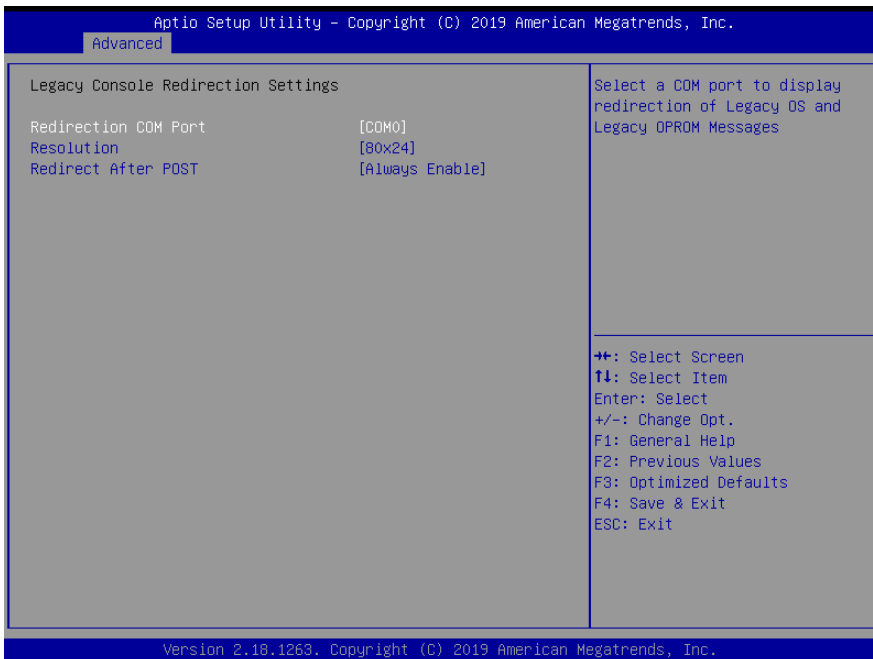
Item	Options	Description
Wake system from S5	Disabled[Default], Fixed Time Dynamic Time	Enable or disable System wake on alarm event. Select Fixed Time, system will wake on the hr::min::sec specified. Select Dynamic Time, System will wake on the current time + Increase minute(s).

3.6.2.6 Serial Port Console Redirection



Item	Options	Description
Console Redirection	Disabled[Default], Enabled	Console Redirection Enable or Disable.

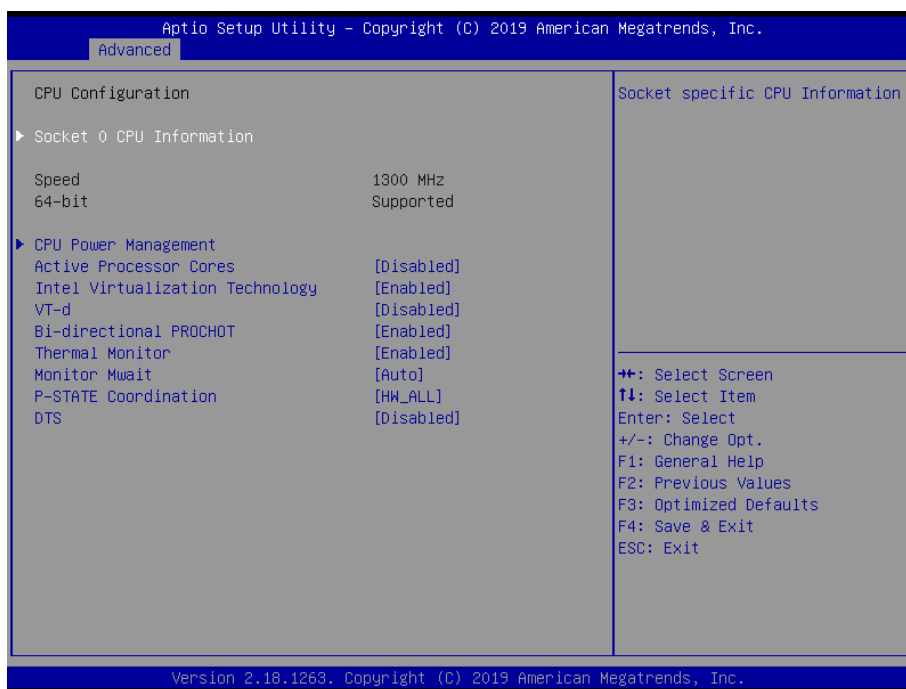
3.6.2.6.1 Legacy Console Redirection Settings



Item	Option	Description
Redirection COM Port	COM0[Default]	Select a COM port to display redirection of Legacy OS and Legacy OPRM Messages.
Resolution	80x24[Default] 80x25	On Legacy OS, the Number of Rows and Columns supported redirection.
Redirect After POST	Always Enable[Default] Bootloader	When Bootloader is selected, then Legacy Console Redirection is disabled before booting to legacy OS. When Always Enable is selected, then Legacy Console Redirection is enabled for legacy OS. Default setting for this option is set to Always Enable.

3.6.2.7 CPU Configuration

Use the CPU configuration menu to view detailed CPU specification and configure the CPU.

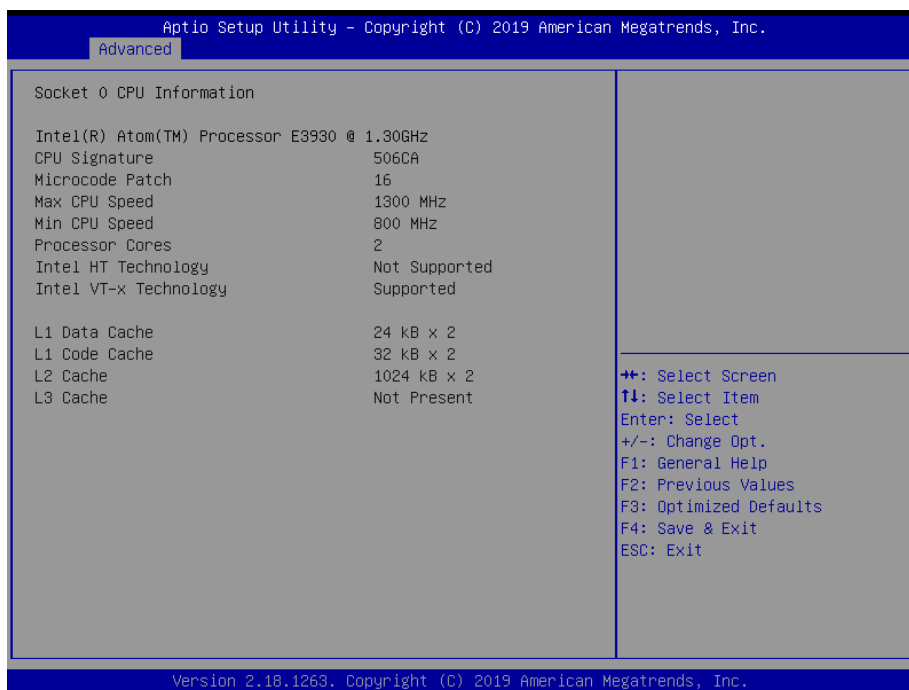


Item	Options	Description
Active Processor Cores	Disabled[Default] Enabled	Number of cores to enable in each processor package.
Intel Virtualization Technology	Disabled Enabled[Default]	When enabled, a VMM can utilize the additional hardware capabilities provided by Vanderpool Technology.
VT-d	Disabled[Default] Enabled	Enable/Disable CPU VT-d.
Bi-directional PROCHOT	Disabled Enabled[Default]	When a processor thermal sensor trips (either core), the PROCHOT# will be driven. If bi-direction is enabled, external agents can drive PROCHOT# to throttle the processor.

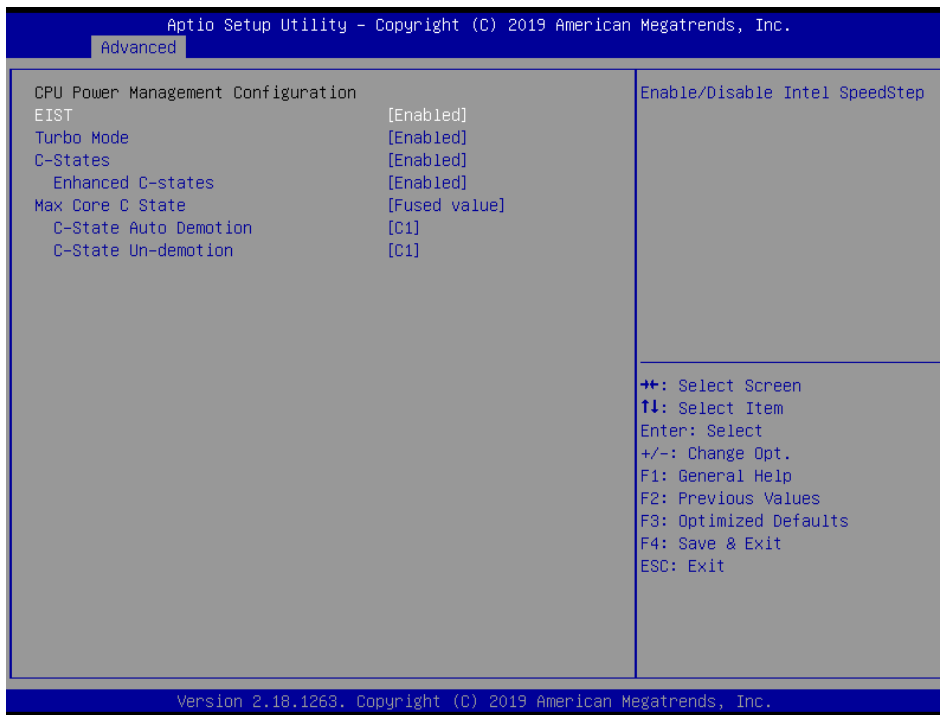
ECM-APL User's Manual

Thermal Monitor	Disabled Enabled[Default]	Enable/Disable Thermal Monitor.
Monitor Mwait	Disabled Enabled Auto[Default]	Enable/Disable Monitor Mwait.
P-STATE Coordination	HW_ALL[Default] SW_ALL SW_ANY	Change P-STATE Coordination type.
DTS	Disabled[Default] Enabled	Enable/Disable Digital Thermal Sensor.

3.6.2.7.1 Socket 0 CPU Information

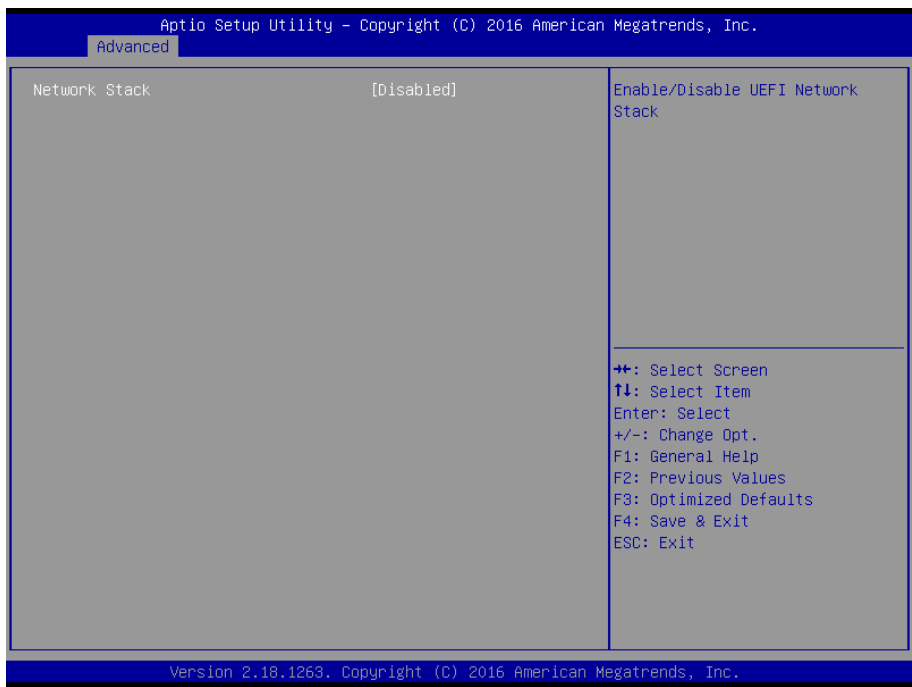


3.6.2.7.2 CPU Power Management Configuration



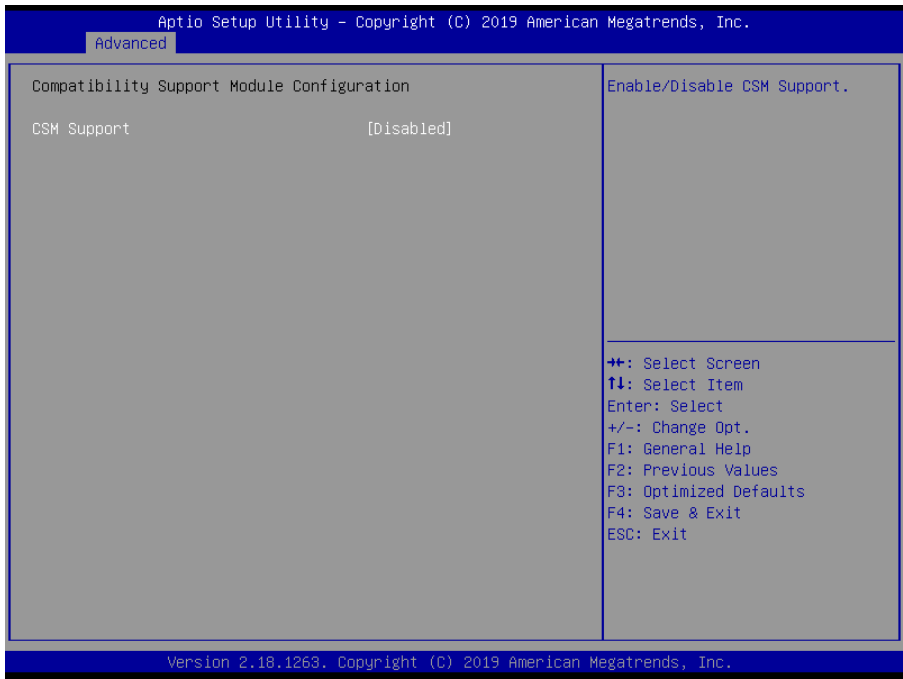
Item	Option	Description
EIST	Disabled Enabled[Default]	Enable/Disable Intel SpeedStep.
Turbo Mode	Disabled Enabled[Default]	Turbo Mode.
C-States	Disabled Enabled[Default]	Enable/Disable C-States.
Enhanced C-states	Disabled Enabled[Default]	Enable/Disable C1E. When enabled, CPU will switch to minimum speed when all cores enter C-State.
Max Core C State	Fused value[Default] Core C10 Core C9 Core C8 Core C7 Core C6 Core C1 Unlimited	This option controls the Max Core C State that cores will support.
C-State Auto Demotion	Disabled C1[Default]	Configure C-State Auto Demotion.
C-State Un-demotion	Disabled C1[Default]	Configure C-State Un-demotion.

3.6.2.8 Network Stack Configuration



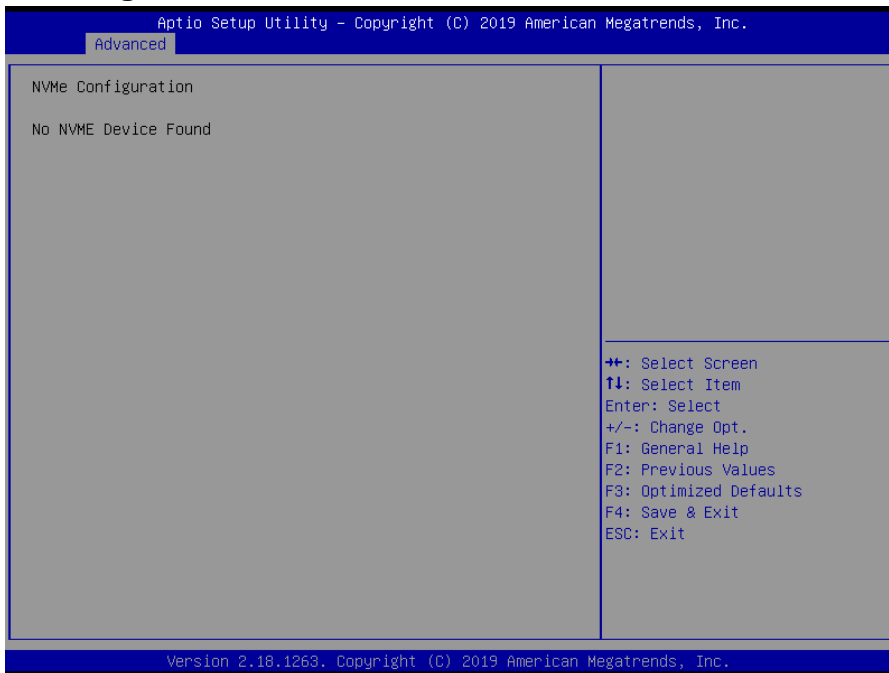
Item	Options	Description
Network Stack	Disabled[Default] Enabled	Enable/Disable UEFI Network Stack.

3.6.2.9 CSM Configuration



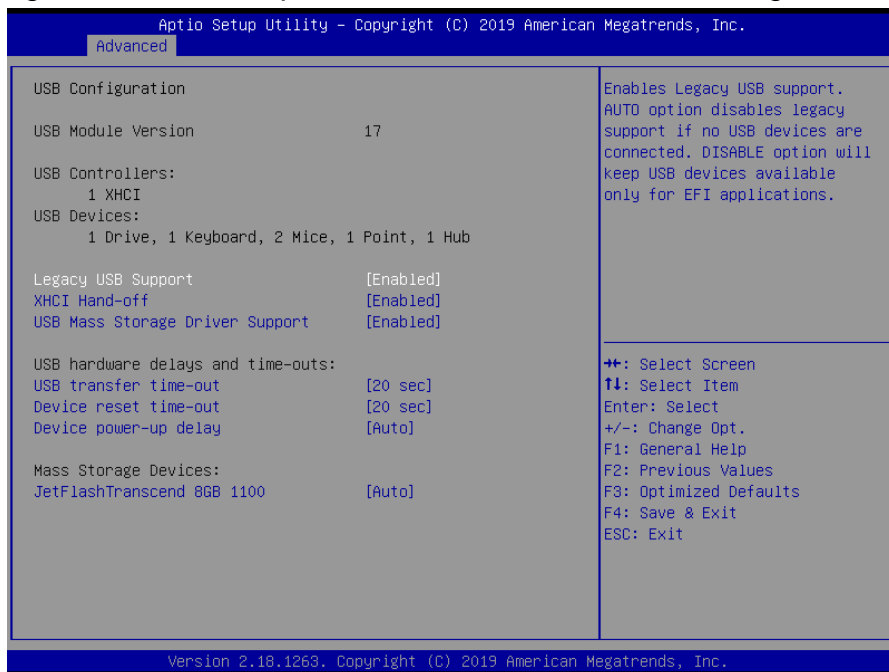
Item	Options	Description
CSM Support	Disabled[Default] Enabled	Enable/Disable CSM Support.

3.6.2.10 NVMe Configuration



3.6.2.11 USB Configuration

The USB Configuration menu helps read USB information and configures USB settings.

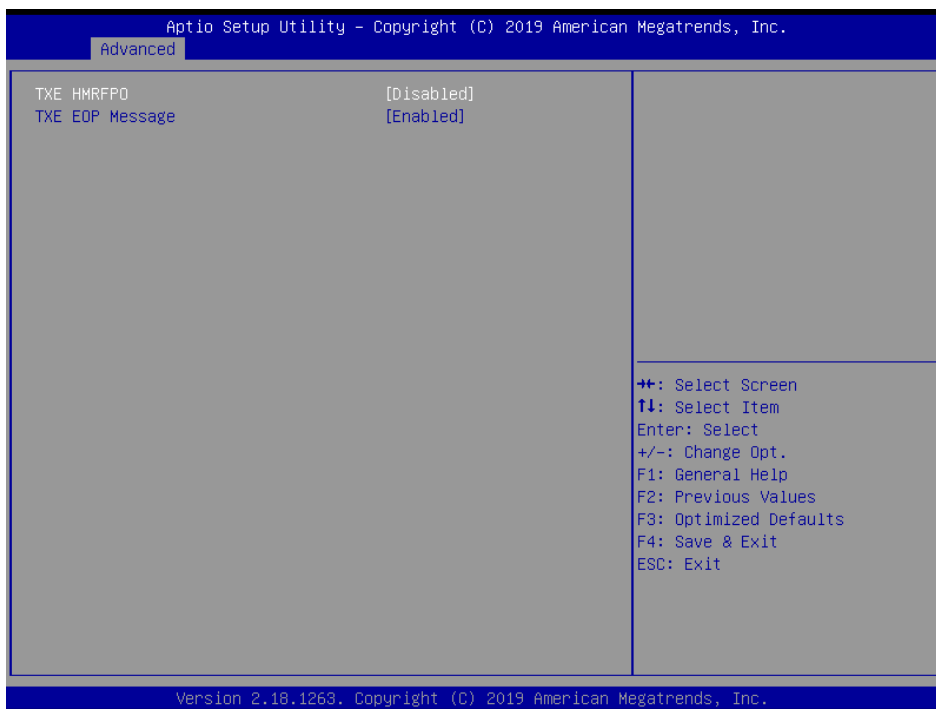


Item	Options	Description
Legacy USB Support	Enabled[Default] Disabled Auto	Enables Legacy USB support. AUTO option disables legacy support if no USB devices are connected. DISABLE option will keep USB devices available only for EFI applications.
XHCI Hand-off	Disabled Enabled[Default]	This is a workaround for OSeS without XHCI hand-off support. The XHCI ownership change should be claimed by XHCI driver.

ECM-APL User's Manual

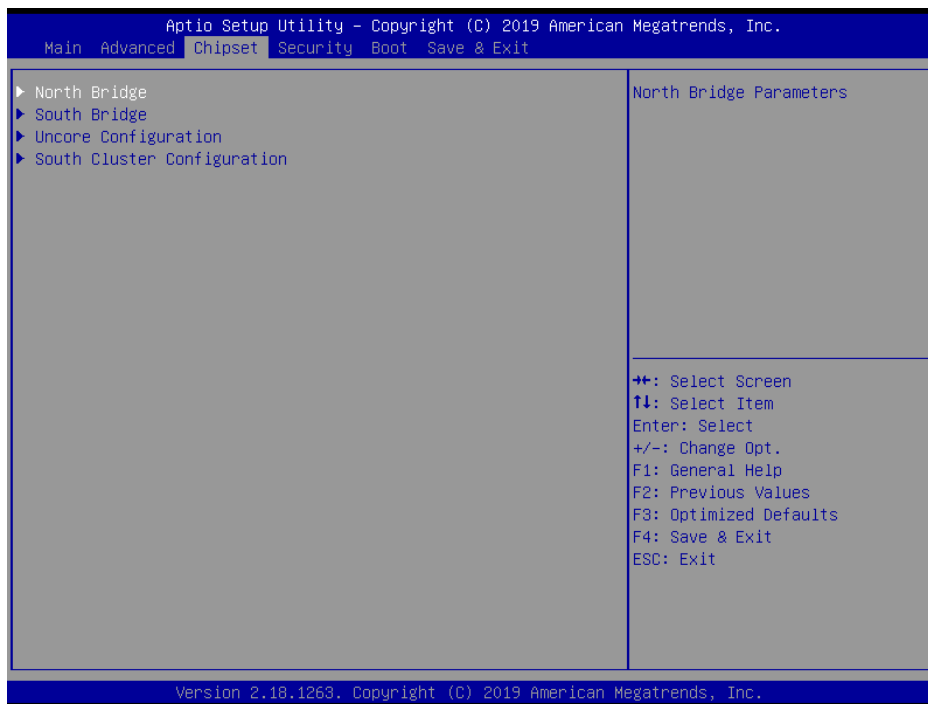
USB Mass Storage Driver Support	Disabled Enabled[Default]	Enable/Disable USB Mass Storage Driver Support.
USB transfer time-out	1 sec 5 sec 10 sec 20 sec[Default]	The time-out value for Control, Bulk, and Interrupt transfers.
Device reset time-out	10 sec 20 sec[Default] 30 sec 40 sec	USB mass storage device Start Unit command time-out.
Device power-up delay	Auto[Default] Manual	Maximum time the device will take before it properly reports itself to the Host Controller. 'Auto' uses default value: for a Root port it is 100ms, for a Hub port the delay is taken form Hub descriptor.
Mass Storage Devices	Auto[Default] Floppy Forced FDD Hard Disk CD-ROM	Mass storage device emulation type. 'AUTO' enumerates devices according to their media format. Optical drives are emulated as 'CDROM', drives with no media will be emulated according to a drive type.

3.6.2.12 Security Configuration

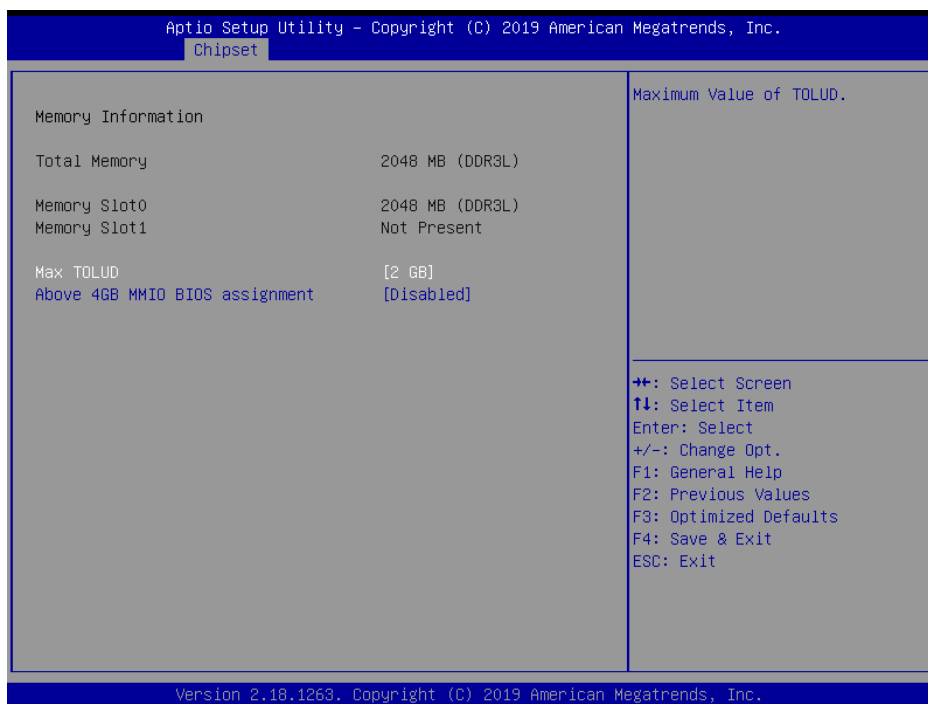


Item	Options	Description
TXE HMRFP0	Enabled Disabled[Default]	TXE HMRFP0.
TXE EOP Message	Enabled[Default] Disabled	Send EOP Message Before Enter OS.

3.6.3 Chipset



3.6.3.1 North Bridge

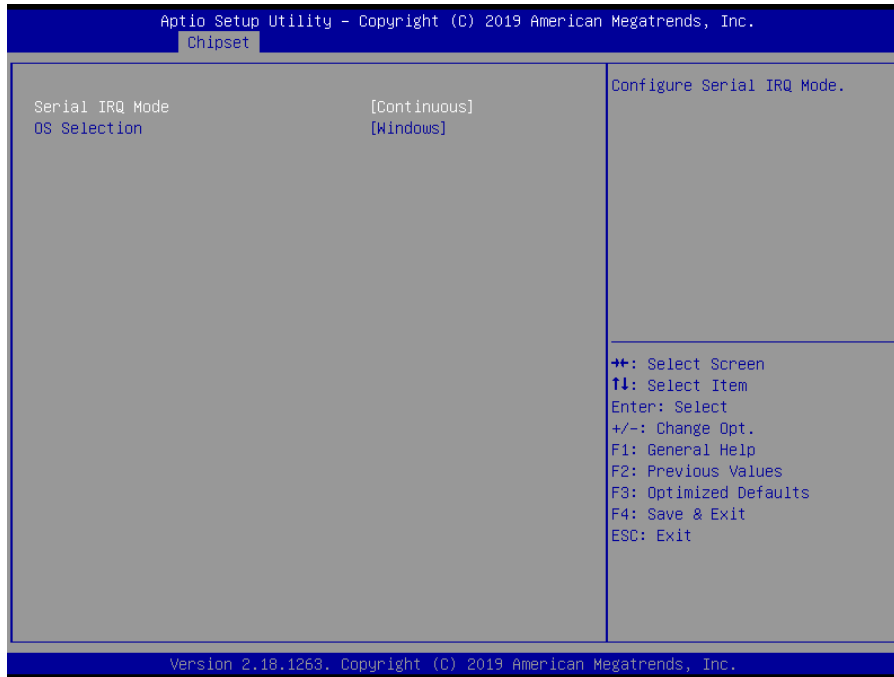


Item	Option	Description
Max TOLUD	2 GB[Default]	Maximum Value of TOLUD.
	2.25 GB	
	2.5 GB	
	2.75 GB	

ECM-APL User's Manual

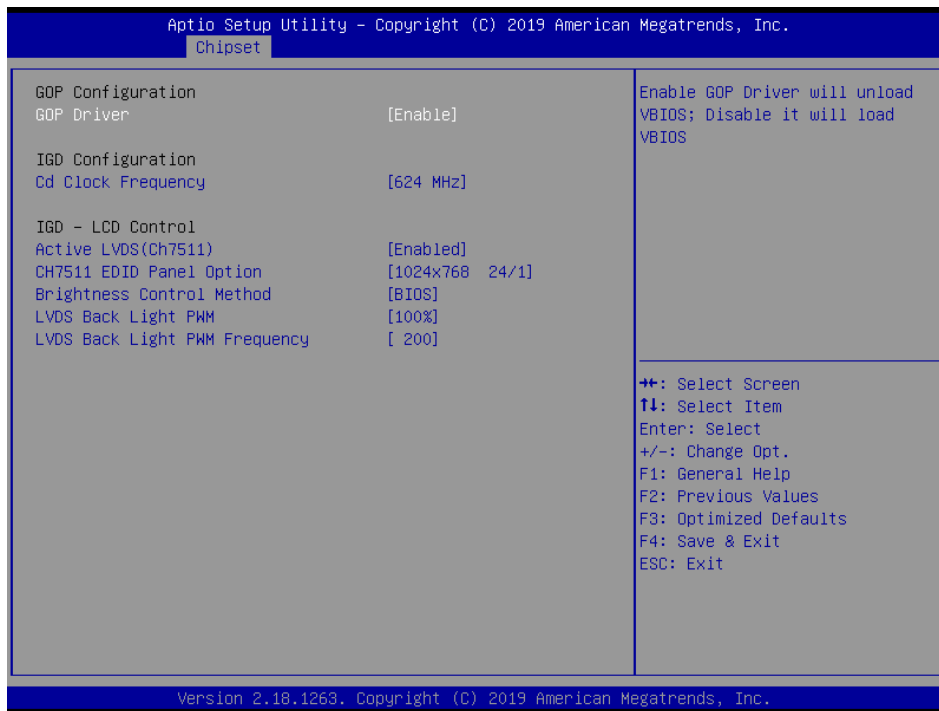
Above 4GB MMIO BIOS assignment	Enabled Disabled[Default]	Enable/Disable above 4GB MemoryMappedIO BIOS assignment. This is disabled automatically when Aperture Size is set to 2048MB.
---------------------------------------	---------------------------------------	--

3.6.3.2 South Bridge



Item	Option	Description
Serial IRQ Mode	Quiet Continuous[Default]	Configure Serial IRQ Mode.
OS Selection	Windows[Default] Android Intel Linux	Select the target OS.

3.6.3.3 Uncore Configuration

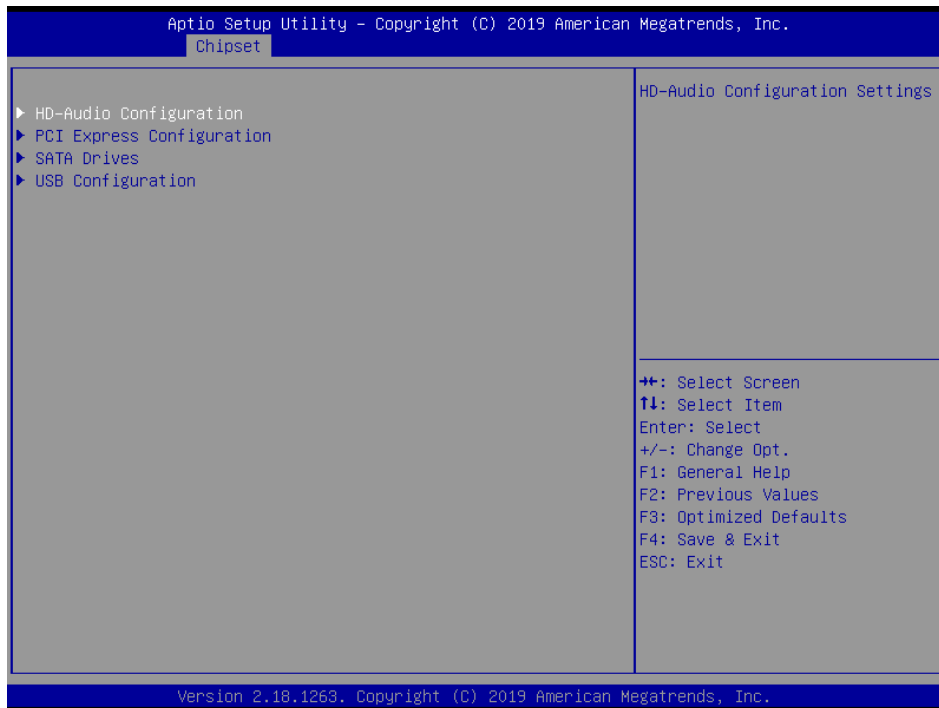


Item	Option	Description
GOP Driver	Enable[Default] Disable	Enable GOP Driver will unload VBIOS ; Dsiable it will load VBIOS.
Cd Clock Frequency	144 MHz 288 MHz 384 MHz 576 MHz 624 MHz[Default]	Select the highest Cd Clock frequency supported by the platform.
Active LVDS (CH7511)	Disabled Enabled[Default]	Active Internal LVDS(eDP->Ch7511-to-LVDS).
CH7511 EDID Panel Option	1024x768 24/1[Default] 800x600 18/1 1024x768 18/1 1366x768 18/1 1024x600 18/1 1280x800 18/1 1920x1200 24/2 1920x1080 18/2 1280x1024 24/2 1440x900 18/2 1600x1200 24/2 1366x768 24/1 1920x1080 24/2 1680x1050 24/2	Port1-EDP to LVDS (Chrotel 7511) Panel EDID Option.
Brightness Control Method	BIOS[Default] OS Driver	LVDS Brightness Control Method. 1.BIOS 2.Brightness Button 3.Variable Resistor 4.OS Driver.

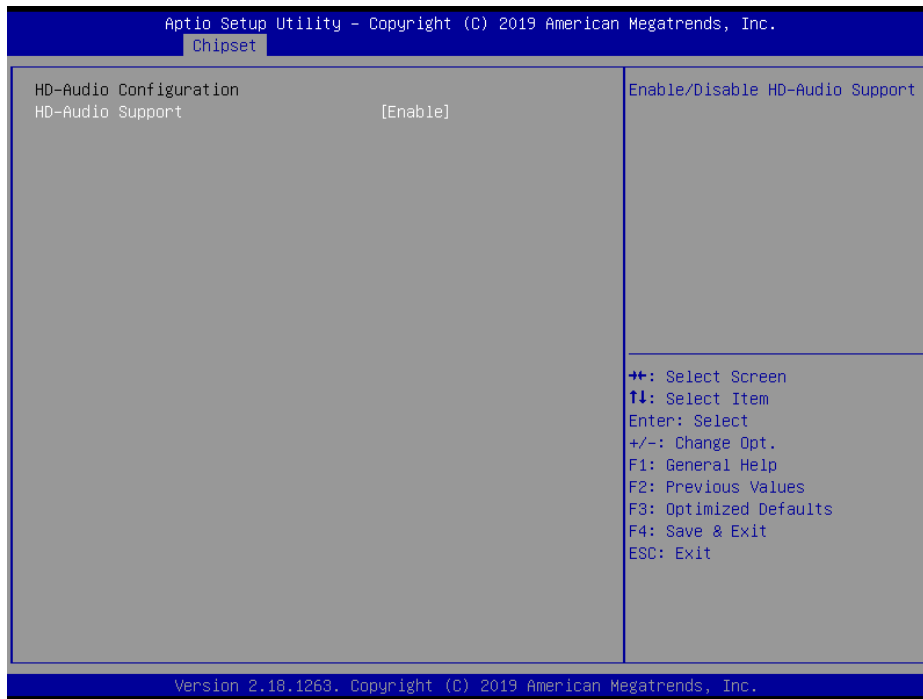
ECM-APL User's Manual

<p>LVDS Back Light PWM</p>	<p>00% 25% 50% 75% 100%[Default]</p>	<p>Select LVDS back light PWM duty.</p>
<p>LVDS Back Light PWM Frequency</p>	<p>200[Default] 300 400 500 700 1k 2k 3k 5k 10k 20k</p>	<p>Select LVDS back light PWM Frequency.</p>

3.6.3.4 South Cluster Configuration



3.6.3.4.1 HD-Audio Configuration



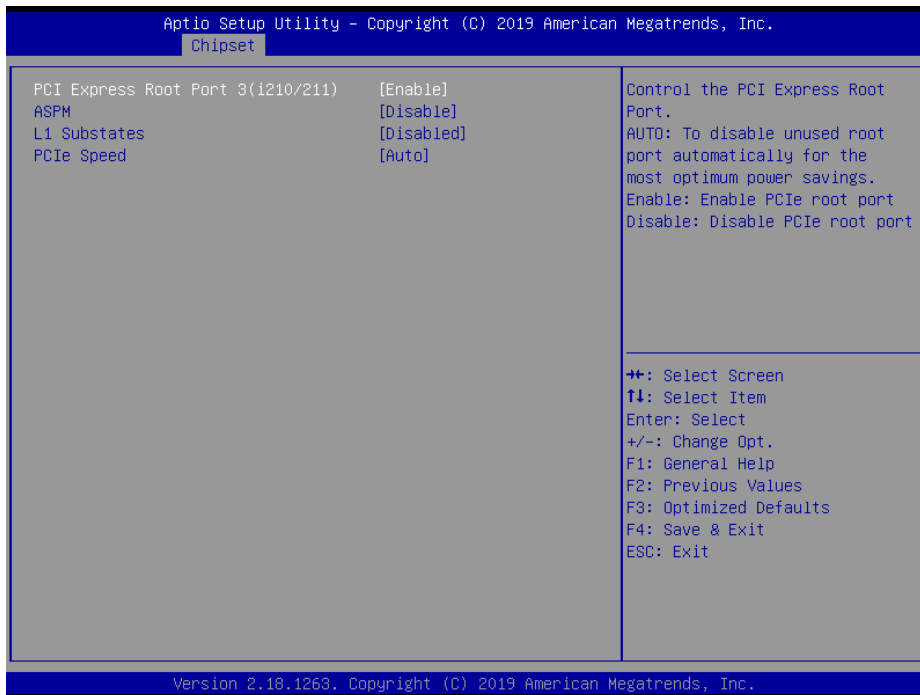
Item	Option	Description
HD-Audio Support	Disable Enable[Default]	Enable/Disable HD-Audio Support.

3.6.3.4.2 PCI Express Configuration



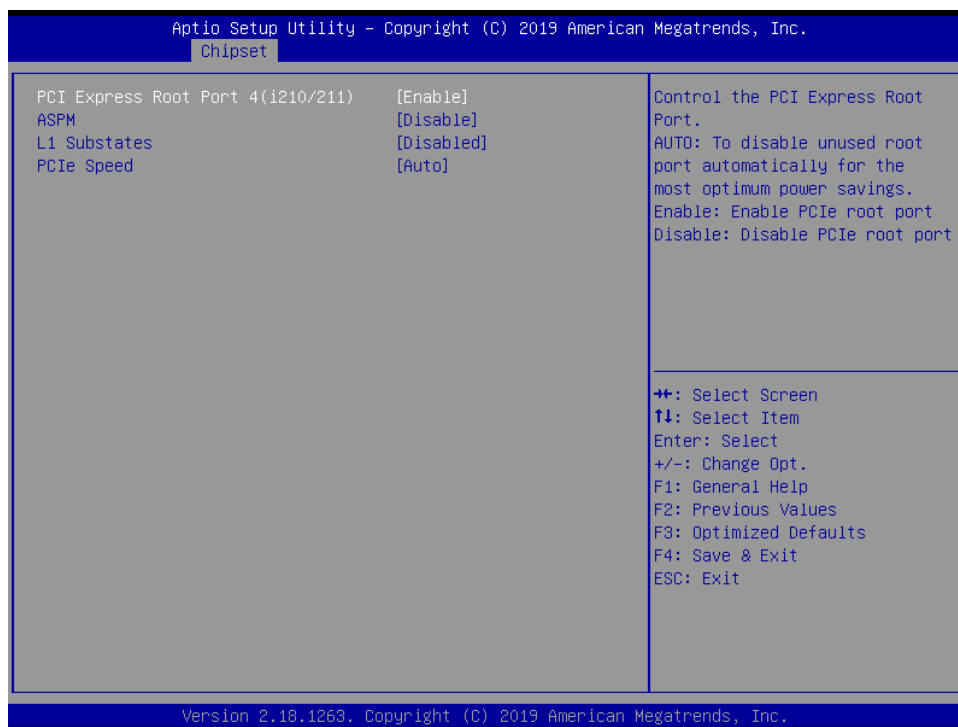
Item	Option	Description
Compliance Mode	Disabled[Default] Enabled	Compliance Mode Enable/Disable.

3.6.3.4.2.1 PCI Express Root Port 3(i210/211)



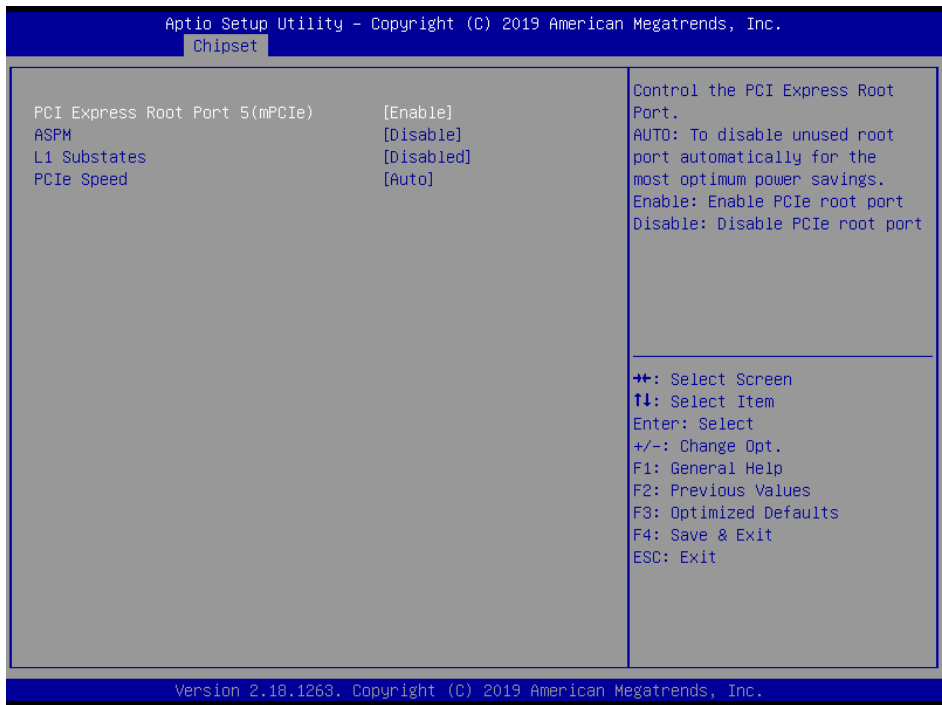
Item	Option	Description
PCI Express Root Port 3(i210/211)	Enabled[Default], Disabled	Control the PCI Express Root Port. AUTO: To disable unused root port automatically for the most optimum power savings. Enable: Enable PCIe root port Disable: Disable PCIe root port.
ASPM	Disable[Default] L0s L1 L0sL1 Auto	PCI Express Active State Power Management settings.
L1 Substates	Disabled[Default] L1.1 L1.2 L1.1 & L1.2	PCI Express L1 Substates settings.
PCIe Speed	Auto[Default] Gen1 Gen2	Configure PCIe Speed.

3.6.3.4.2.2 PCI Express Root Port 4(i210/211)



Item	Option	Description
PCI Express Root Port 4(i210/211)	Enabled[Default], Disabled	Control the PCI Express Root Port. AUTO: To disable unused root port automatically for the most optimum power savings. Enable: Enable PCIe root port Disable: Disable PCIe root port.
ASPM	Disable[Default] L0s L1 L0sL1 Auto	PCI Express Active State Power Management settings.
L1 Substates	Disabled[Default] L1.1 L1.2 L1.1 & L1.2	PCI Express L1 Substates settings.
PCIe Speed	Auto[Default] Gen1 Gen2	Configure PCIe Speed.

3.6.3.4.2.3 PCI Express Root Port 5(mPCIe)



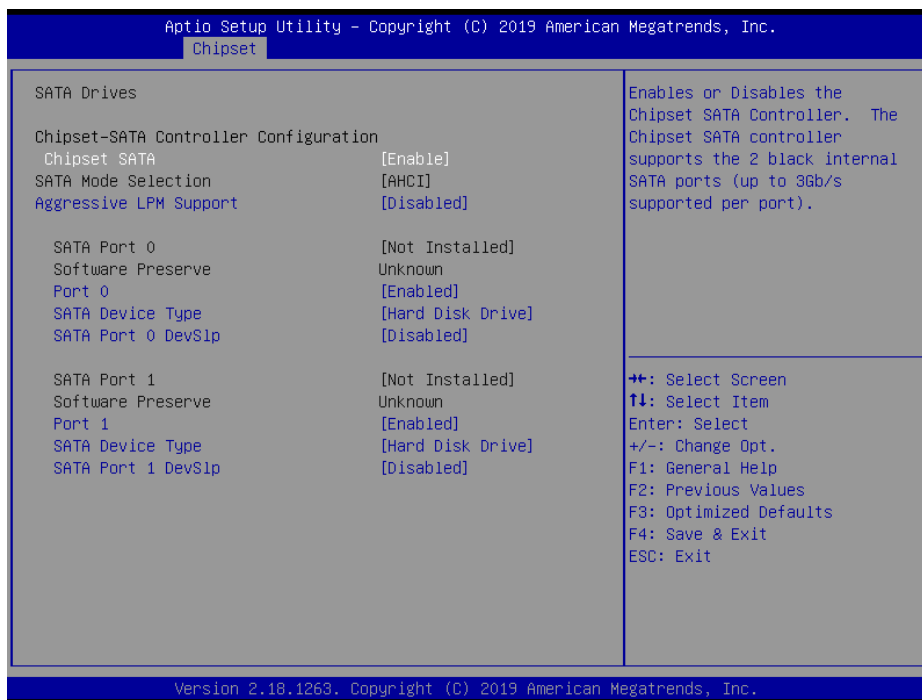
Item	Option	Description
PCI Express Root Port 5(mPCIe)	Enabled [Default] , Disabled	Control the PCI Express Root Port. AUTO: To disable unused root port automatically for the most optimum power savings. Enable: Enable PCIe root port Disable: Disable PCIe root port.
ASPM	Disable [Default] L0s L1 L0sL1 Auto	PCI Express Active State Power Management settings.
L1 Substates	Disabled [Default] L1.1 L1.2 L1.1 & L1.2	PCI Express L1 Substates settings.
PCIe Speed	Auto [Default] Gen1 Gen2	Configure PCIe Speed.

3.6.3.4.2.4 PCI Express Root Port 6(M.2)



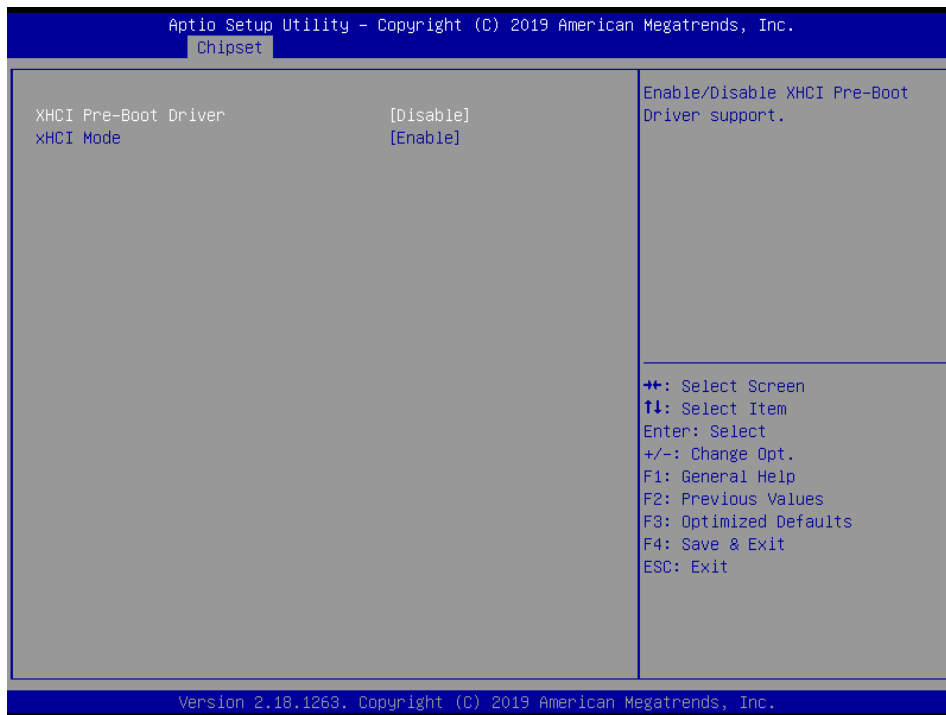
Item	Option	Description
PCI Express Root Port 6(M.2)	Enabled Disabled[Default],	Control the PCI Express Root Port. AUTO: To disable unused root port automatically for the most optimum power savings. Enable: Enable PCIe root port Disable: Disable PCIe root port.
ASPM	Disable[Default] L0s L1 L0sL1 Auto	PCI Express Active State Power Management settings.
L1 Substates	Disabled[Default] L1.1 L1.2 L1.1 & L1.2	PCI Express L1 Substates settings.
PCIe Speed	Auto[Default] Gen1 Gen2	Configure PCIe Speed.

3.6.3.4.3 SATA Drivers



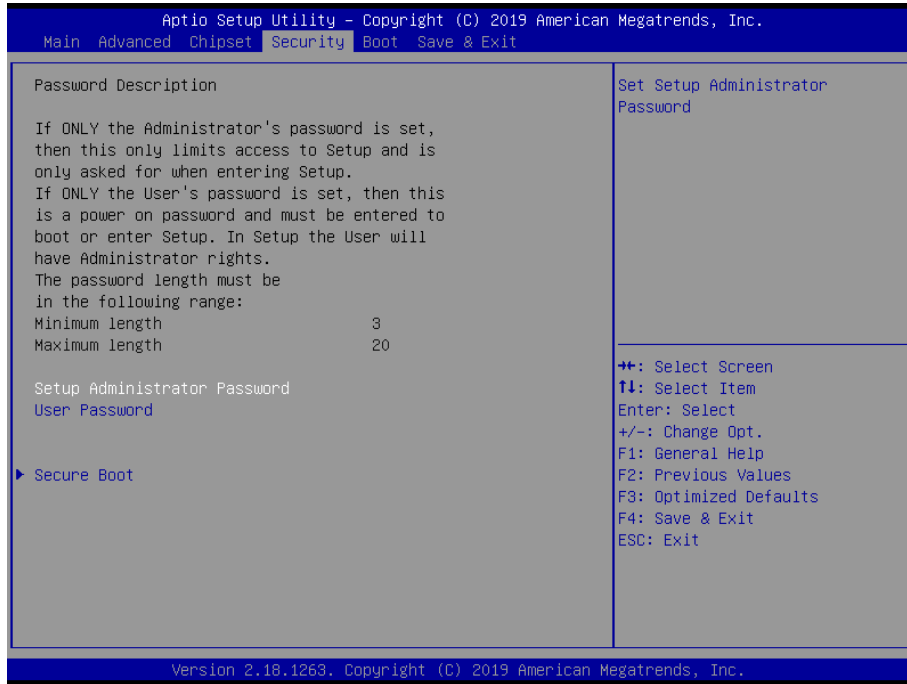
Item	Option	Description
Chipset SATA	Enable[Default] Disable	Enables or Disables the Chipset SATA Controller. The Chipset SATA controller supports the 2 black internal SATA ports (up to 3Gb/s supported per port).
Aggressive LPM Support	Disabled[Default] Enabled	Enable PCH to aggressively enter link power state.
Port 0/1	Disabled Enabled[Default]	Enable or Disable SATA Port.
SATA Device Type	Hard Disk Drive[Default] Solid State Drive	Identify the SATA port is connected to Solid State Drive or Hard Disk Drive.
SATA Port 0/1 DevSlp	Disabled[Default] Enabled	Enable/Disable SATA Port 0/1 DevSlp. Board rework for LP needed before enable.

3.6.3.4.4 USB Configuration



Item	Option	Description
XHCI Pre-Boot Driver	Enable Disable [Default]	Enable/Disable XHCI Pre-Boot Driver support.
xHCI Mode	Enable [Default] Disable	Once disabled, XHCI controller would be function disabled, none of the USB devices are detectable and usable during boot and in OS. Do not disable it unless for debug purpose.

3.6.4 Security



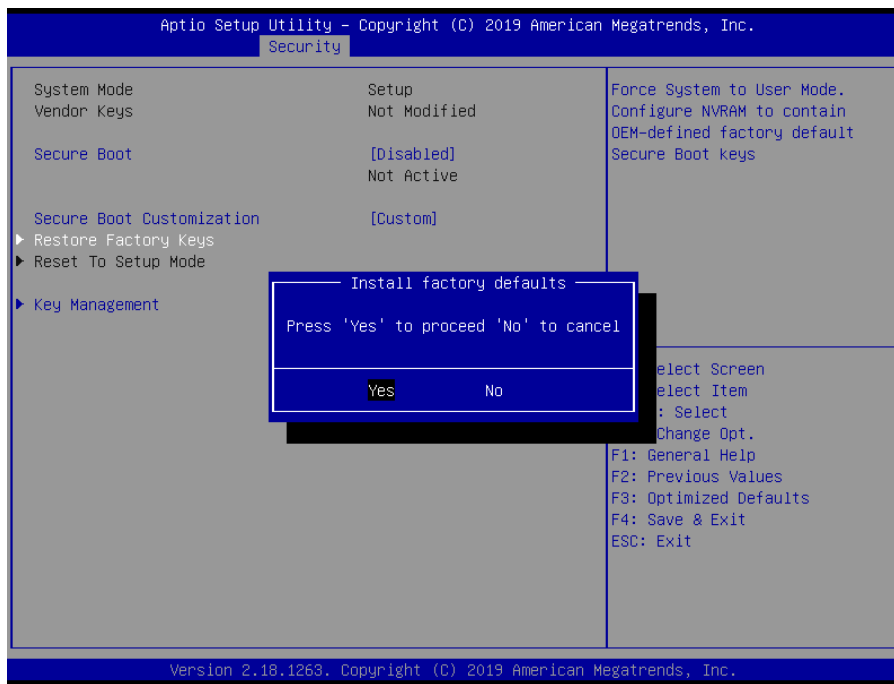
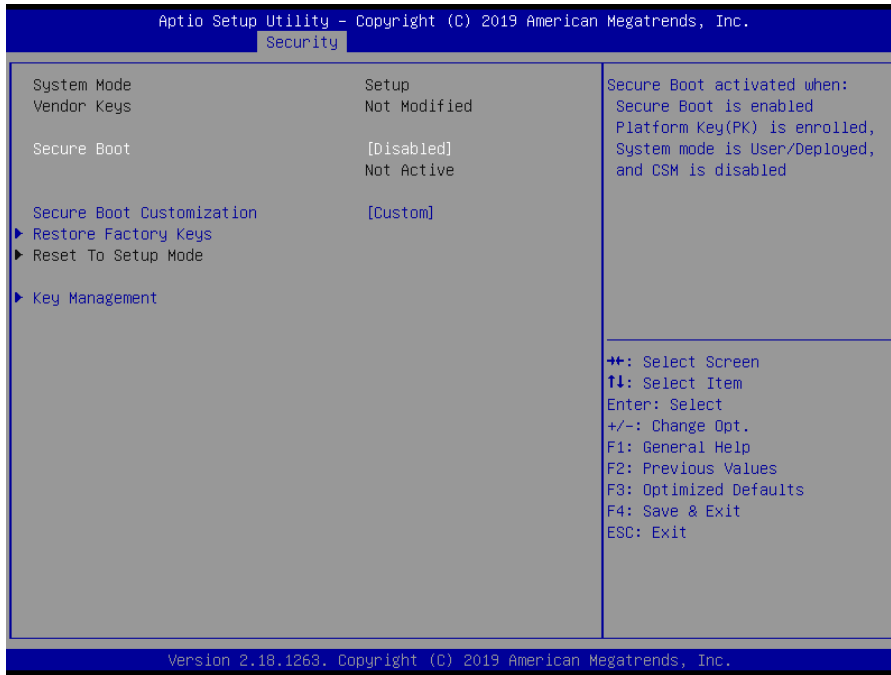
- **Setup Administrator Password**

Set setup Administrator Password

- **User Password**

Set User Password

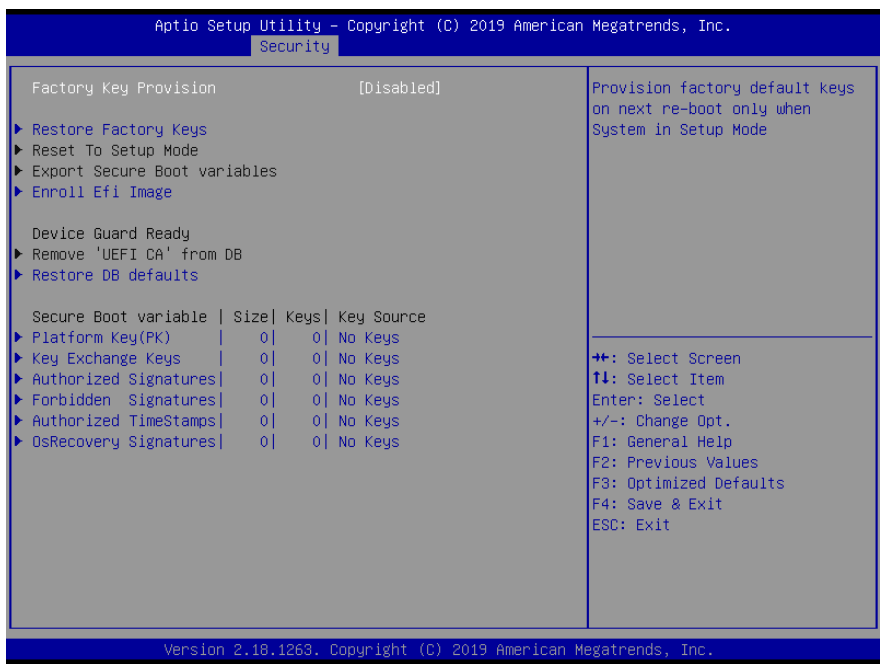
3.6.4.1 Secure Boot



Item	Option	Description
Secure Boot	Disabled[Default] Enabled	Secure Boot activated when: Secure Boot is enabled. Platform Key(PK) is enrolled, System mode is User/Deployed, and CSM function is disabled.
Secure Boot Customization	Standard Customized[Default]	Secure Boot Mode – Custom_Standard, Set UEFI Secure Boot Mode to STANDARD mode or CUSTOM mode, this change is effect after save. And after reset, the mode will return to STANDARD mode.

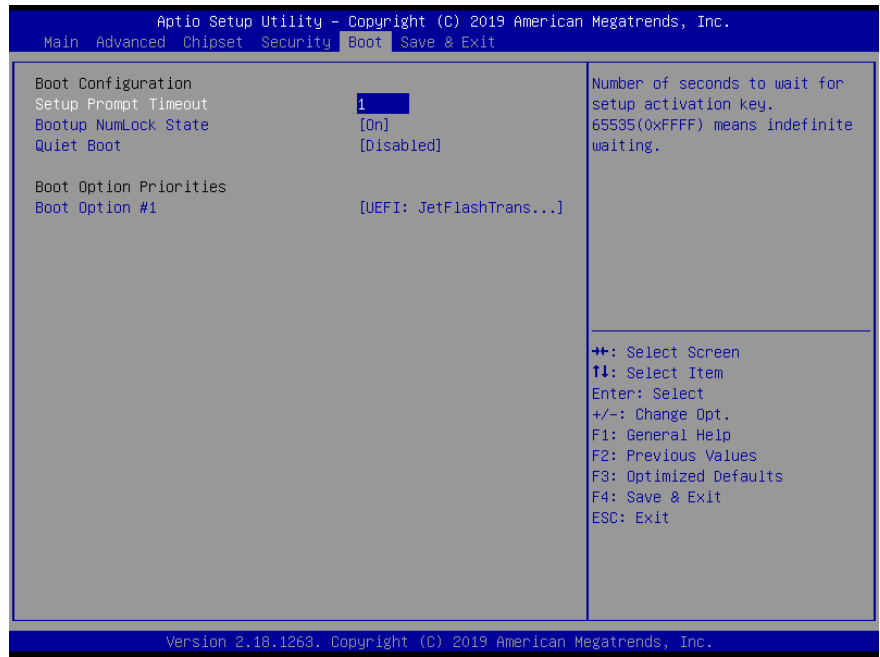
ECM-APL User's Manual

3.6.4.1.1 Key Management



Item	Option	Description
Provision Factory Defaults	Disabled[Default] Enabled	Provision factory default keys on next re-boot when System is in Setup Mode.

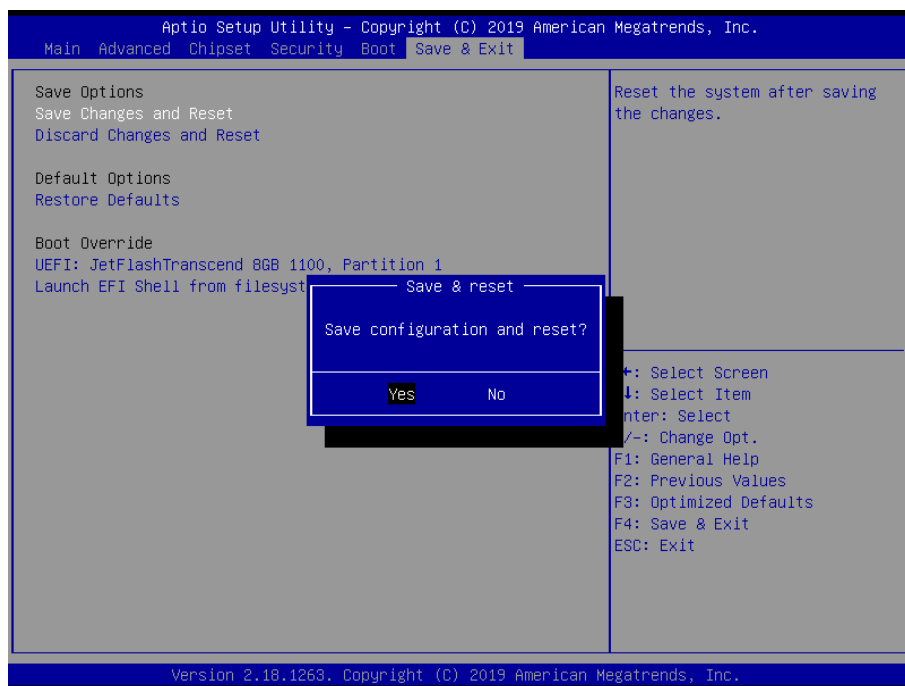
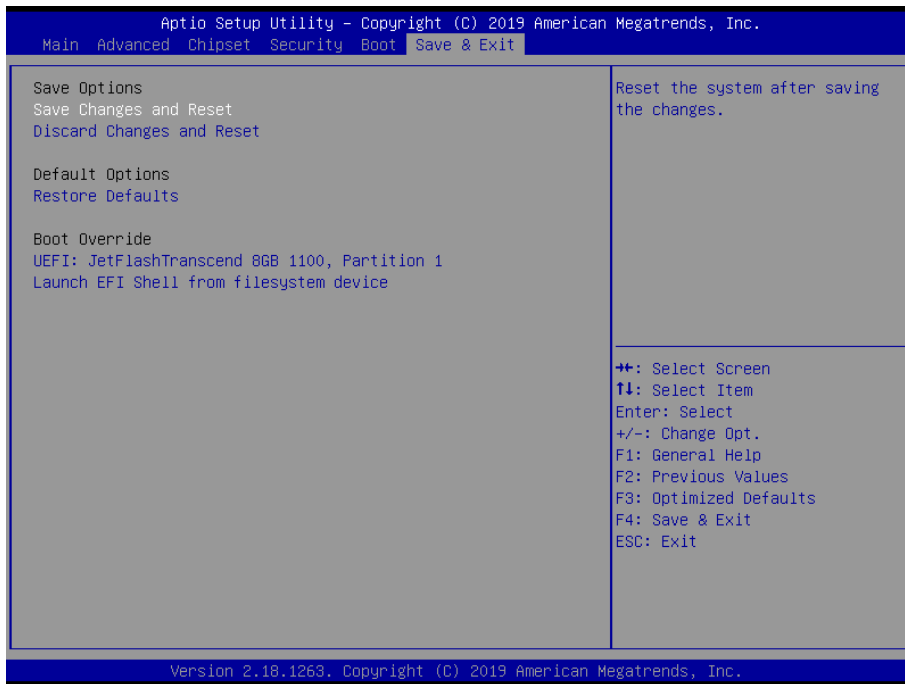
3.6.5 Boot



Item	Option	Description
Setup Prompt Timeout	1~ 65535	Number of seconds to wait for setup activation key. 65535(0xFFFF) means indefinite waiting.

Bootup NumLock State	On[Default] Off	Select the Keyboard NumLock state
Quiet Boot	Disabled[Default] Enabled	Enables or disables Quiet Boot option
Boot Option #1	Set the system boot order.	

3.6.6 Save and exit



3.6.6.1 Save Changes and Reset

Reset the system after saving the changes.

3.6.6.2 Discard Changes and Reset

Any changes made to BIOS settings during this session of the BIOS setup program are discarded. The setup program then exits and reboots the controller.

3.6.6.3 Restore Defaults

This option restores all BIOS settings to the factory default. This option is useful if the controller exhibits unpredictable behavior due to an incorrect or inappropriate BIOS setting.

3.6.6.4 Launch EFI Shell from filesystem device

Attempts to Launch EFI Shell application (Shellx64.efi) from one of the available filesystem devices.

4. Drivers Installation



Note: Installation procedures and screen shots in this section are for your reference and may not be exactly the same as shown on your screen.

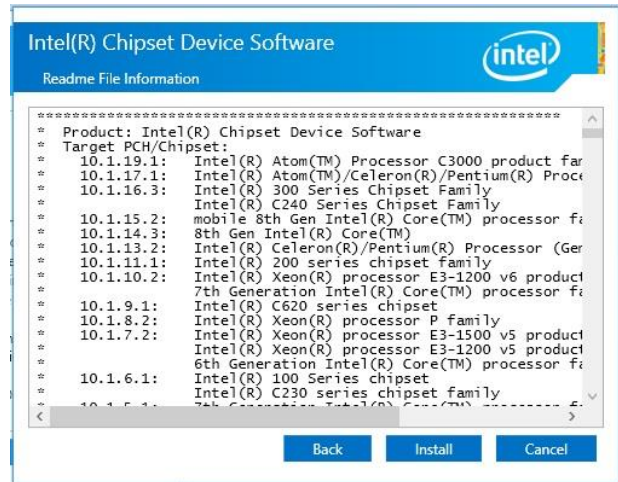
4.1 Install Chipset Driver

All drivers can be found on the Avalue Official Website:

<http://www.avalue.com.tw>.



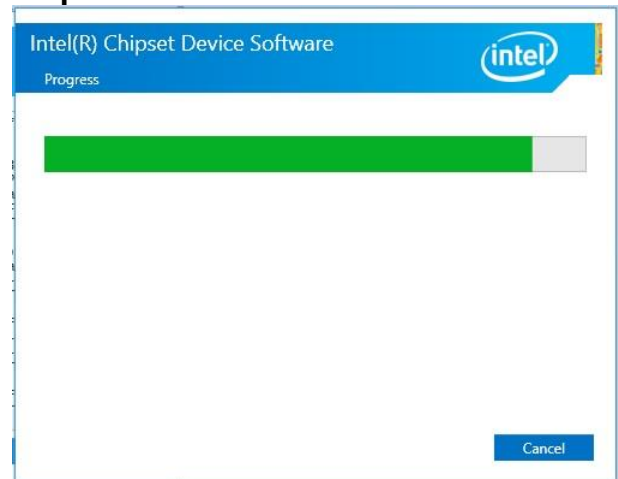
Note: The installation procedures and screen shots in this section are based on Windows 10 operation system. If the warning message appears while the installation process, click Continue to go on.



Step 3. Click Install.



Step 1. Click Next.



Step 4. Installing.



Step 2. Click Accept.



Step 5. Complete setup.

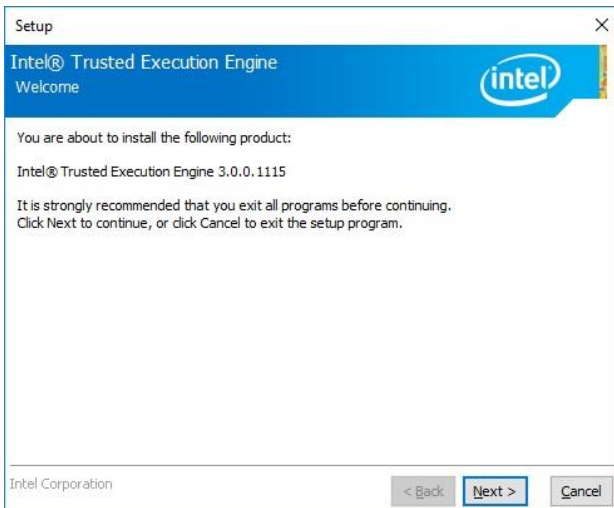
4.2 Install TXE Driver

All drivers can be found on the Avalue Official Website:

<http://www.avalu.com.tw>.



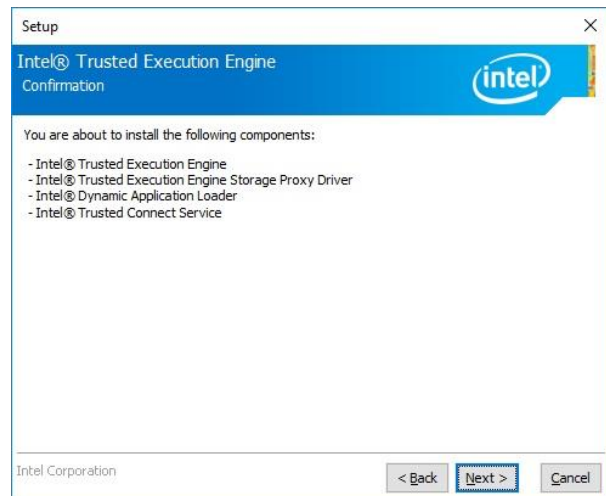
Note: The installation procedures and screen shots in this section are based on Windows 10 operation system. If the warning message appears while the installation process, click Continue to go on.



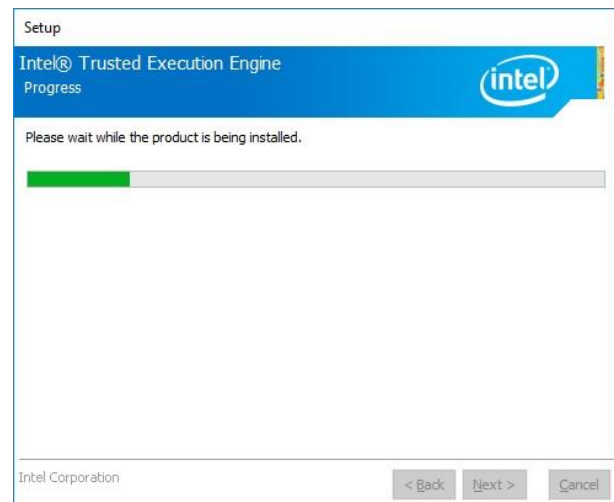
Step1. Click **Next** to start installation.



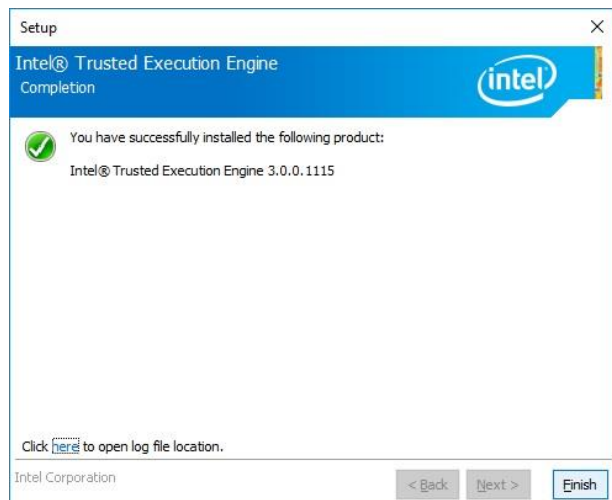
Step 2. Click **Next**.



Step 3. Click **Next** to continue installation.



Step 4. Installing.



Step 5. Click **Finish** to complete setup.

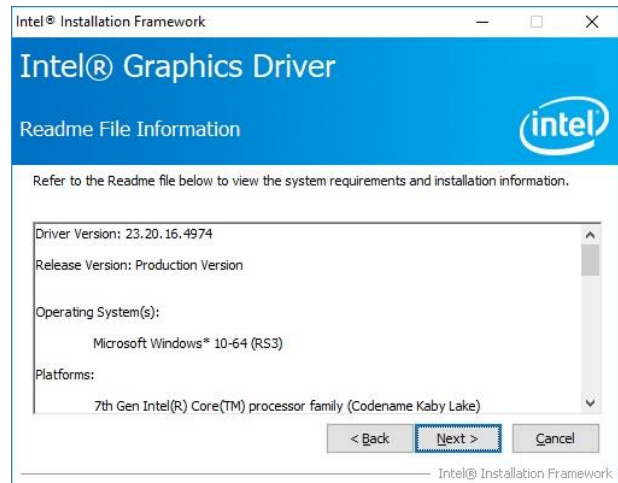
ECM-APL User's Manual

4.3 Install VGA Driver

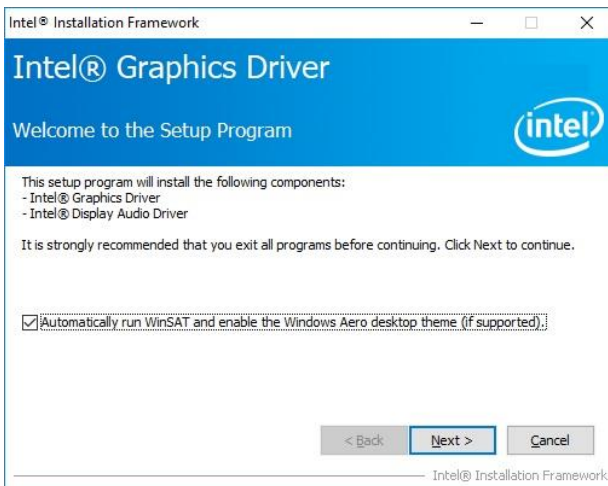
All drivers can be found on the Avalue Official Website:
<http://www.avalue.com.tw>.



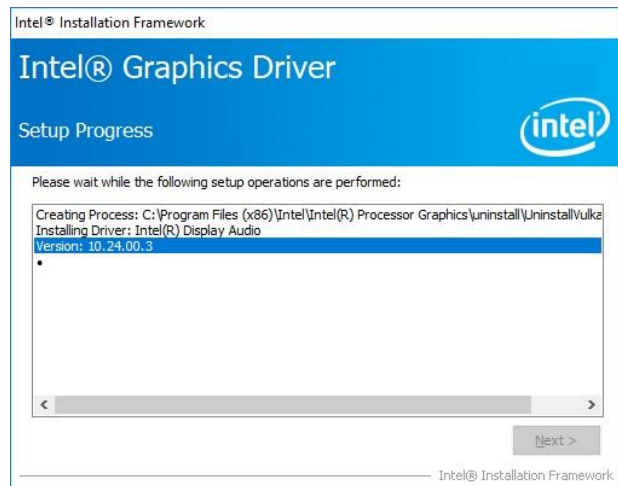
Note: The installation procedures and screen shots in this section are based on Windows 10 operation system.



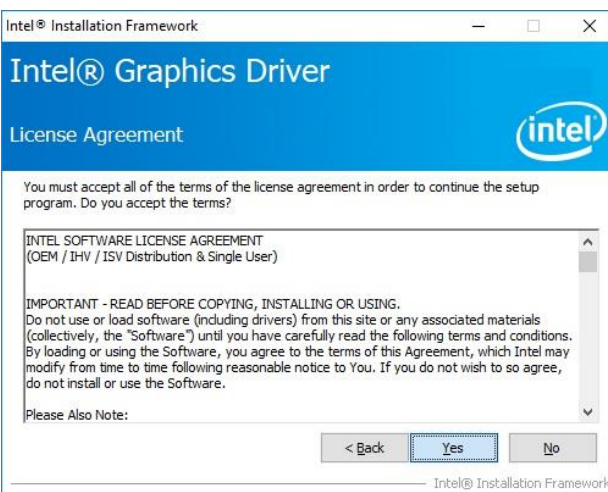
Step 3. Click Next.



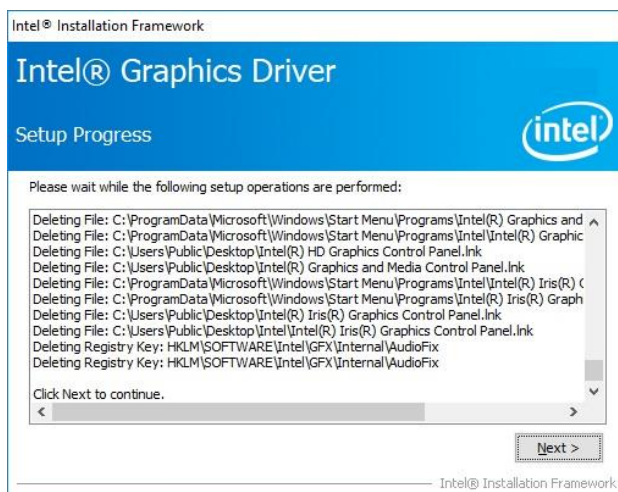
Step 1. Click Next.



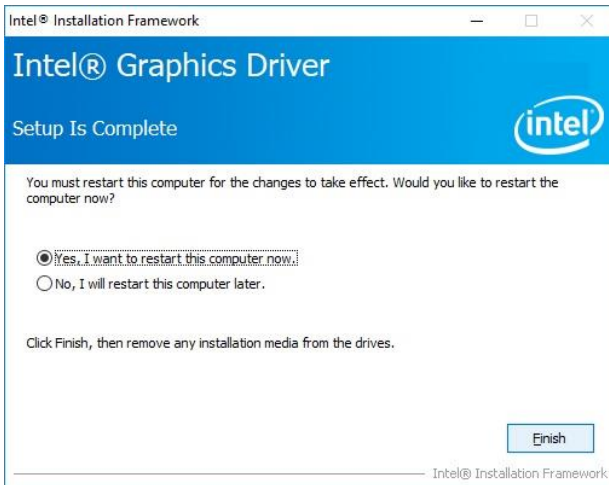
Step 4. Click Next.



Step 2.
Click **Yes** to accept license agreement.



Step 5. Click Next.



Step 6. Click **Finish** to complete setup.

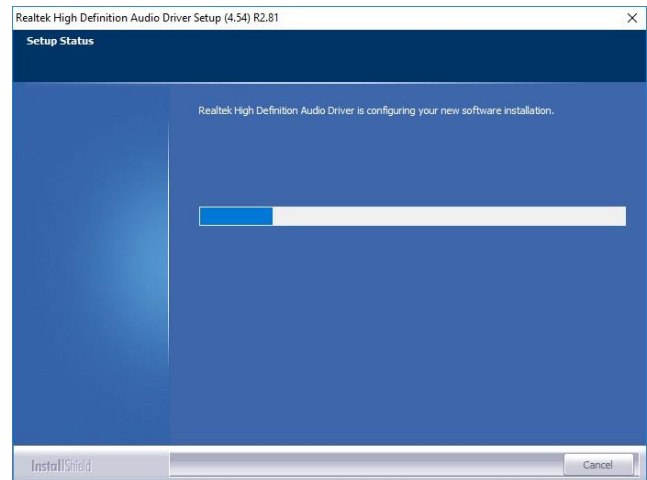
4.4 Install Audio Driver (For Realtek ALC888S)

All drivers can be found on the Avalue Official Website:

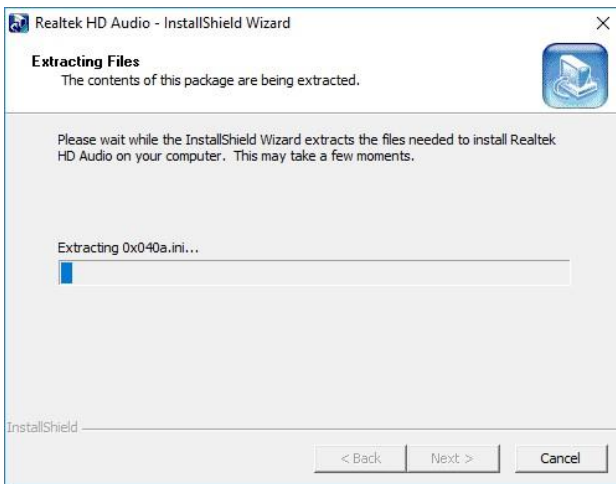
<http://www.avalue.com.tw>.



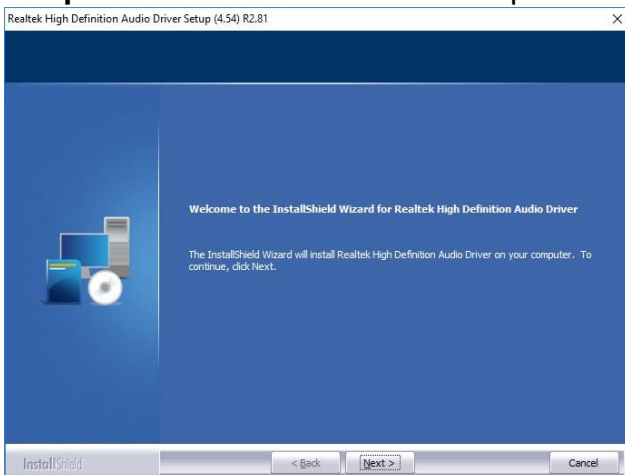
Note: The installation procedures and screen shots in this section are based on Windows 10 operation system.



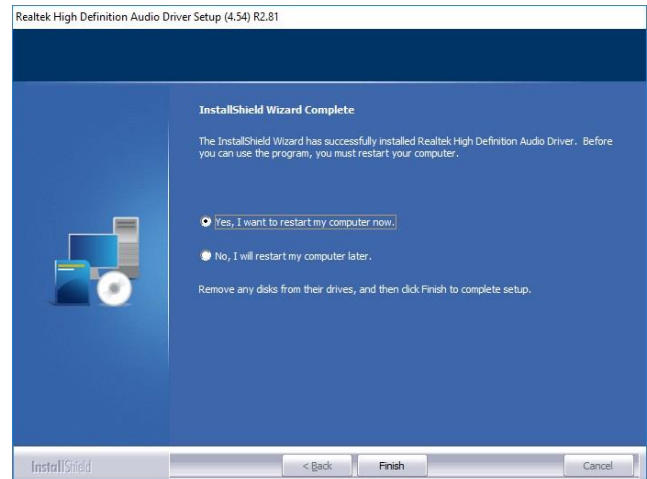
Step 3. Installing.



Step 1. Click Next to continue setup.



Step 2. Click Next.



Step 4. Click Finish to complete the setup.

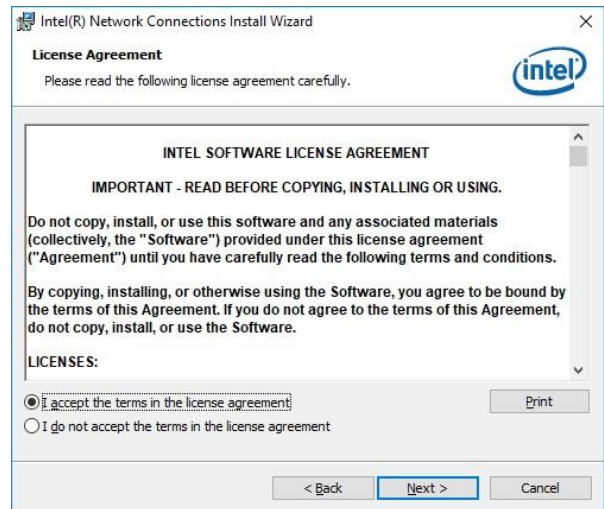
4.5 Install Ethernet Driver

All drivers can be found on the Avalue Official Website:

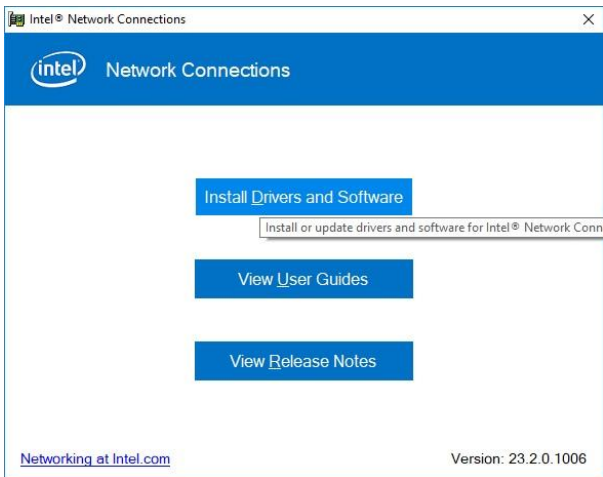
<http://www.avalue.com.tw>.



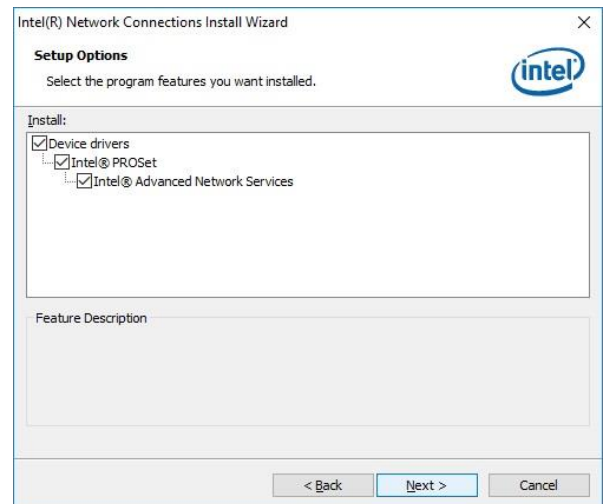
Note: The installation procedures and screen shots in this section are based on Windows 10 operation system.



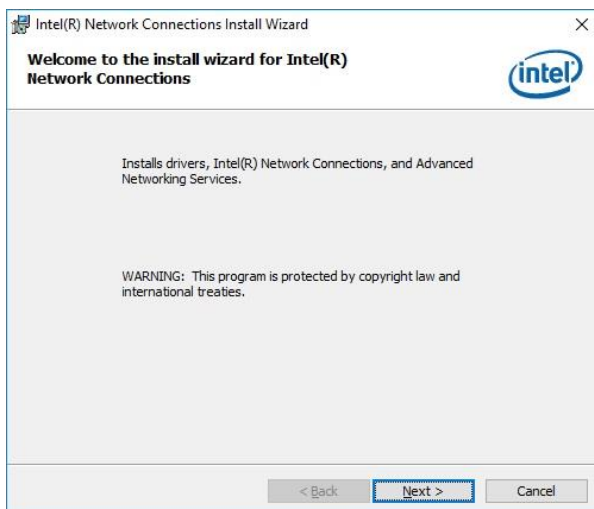
Step 3. Click Next.



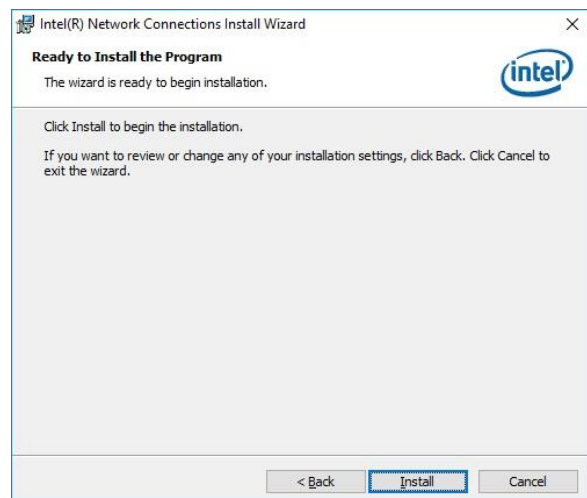
Step 1. Click Install Drivers and Software.



Step 4. Click Next.

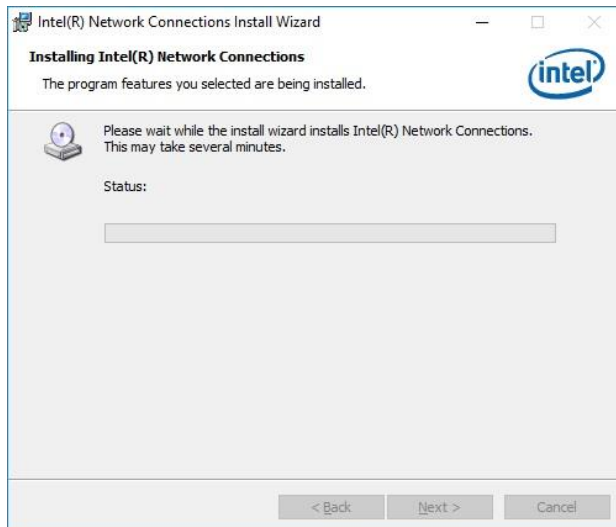


Step 2. Click Next to proceed.

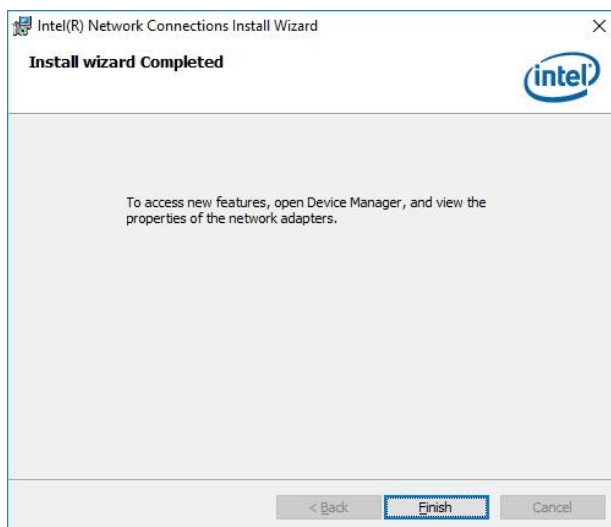


Step 5. Click Install.

ECM-APL User's Manual



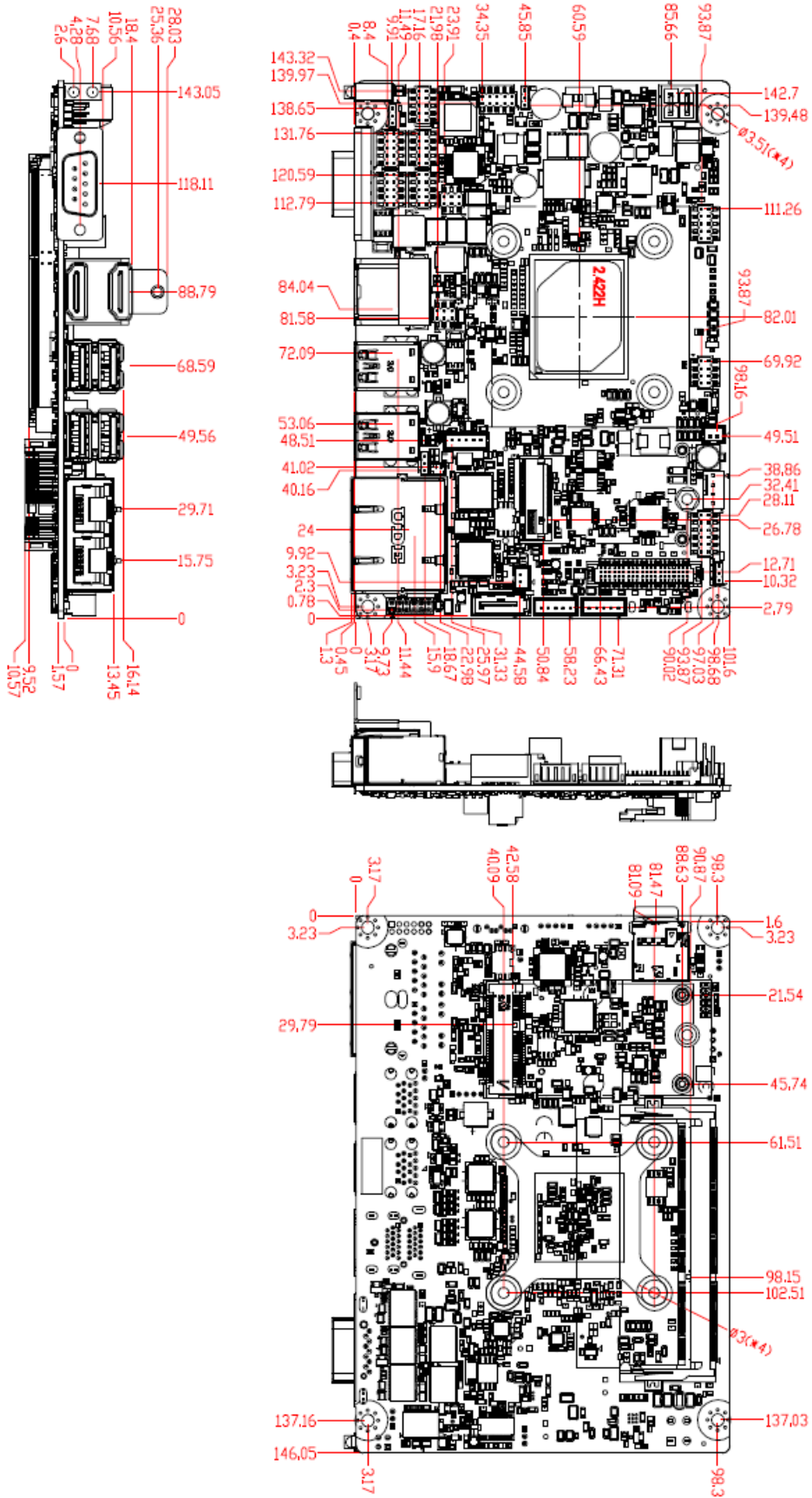
Step 6. Click Next.



Step 7. Click Finish to complete the setup.

5. Mechanical Drawing

ECM-APL User's Manual



Unit: mm

